



realistic
visualizations

sustainable apartment in leidschendam

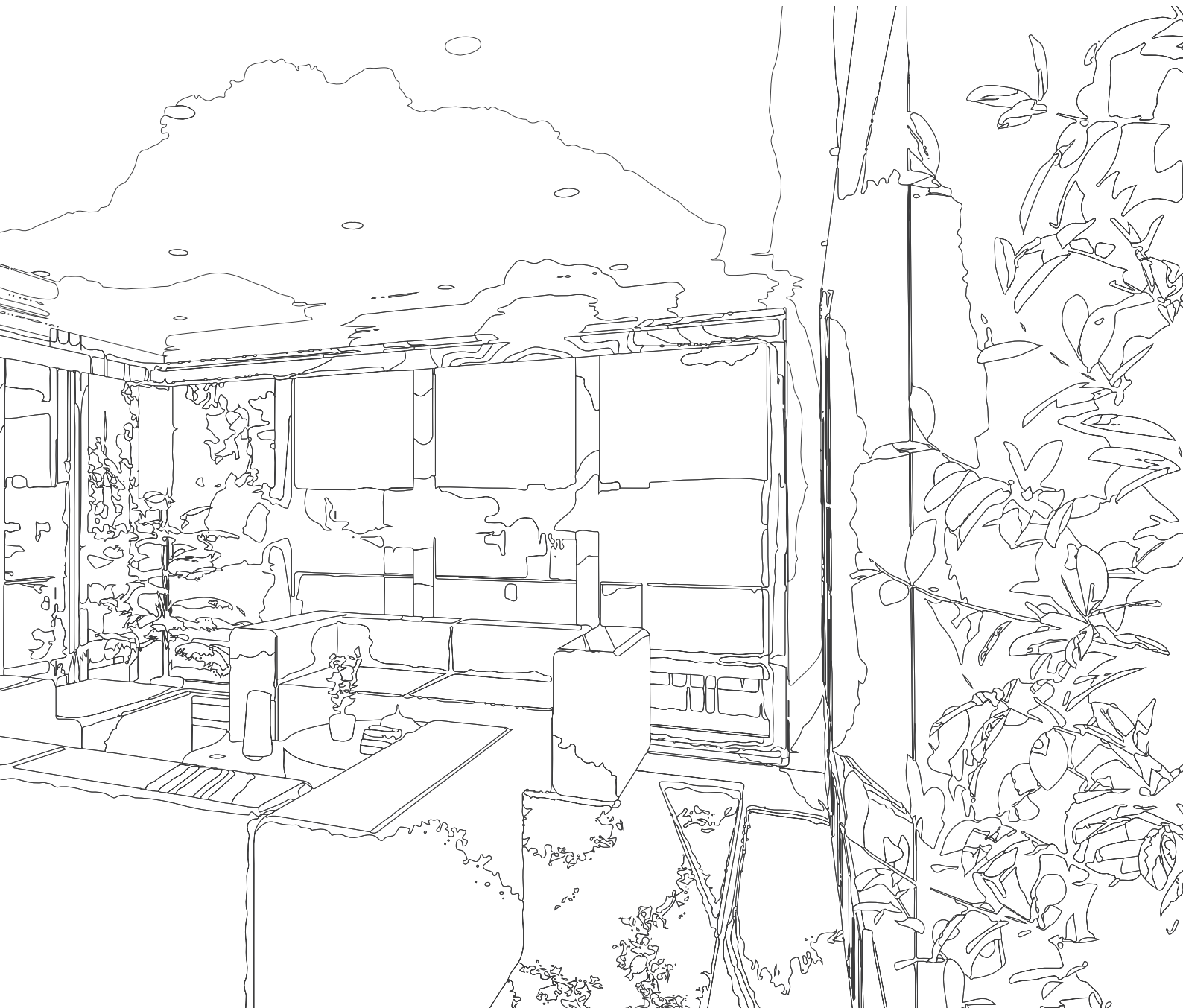
TRIADOME

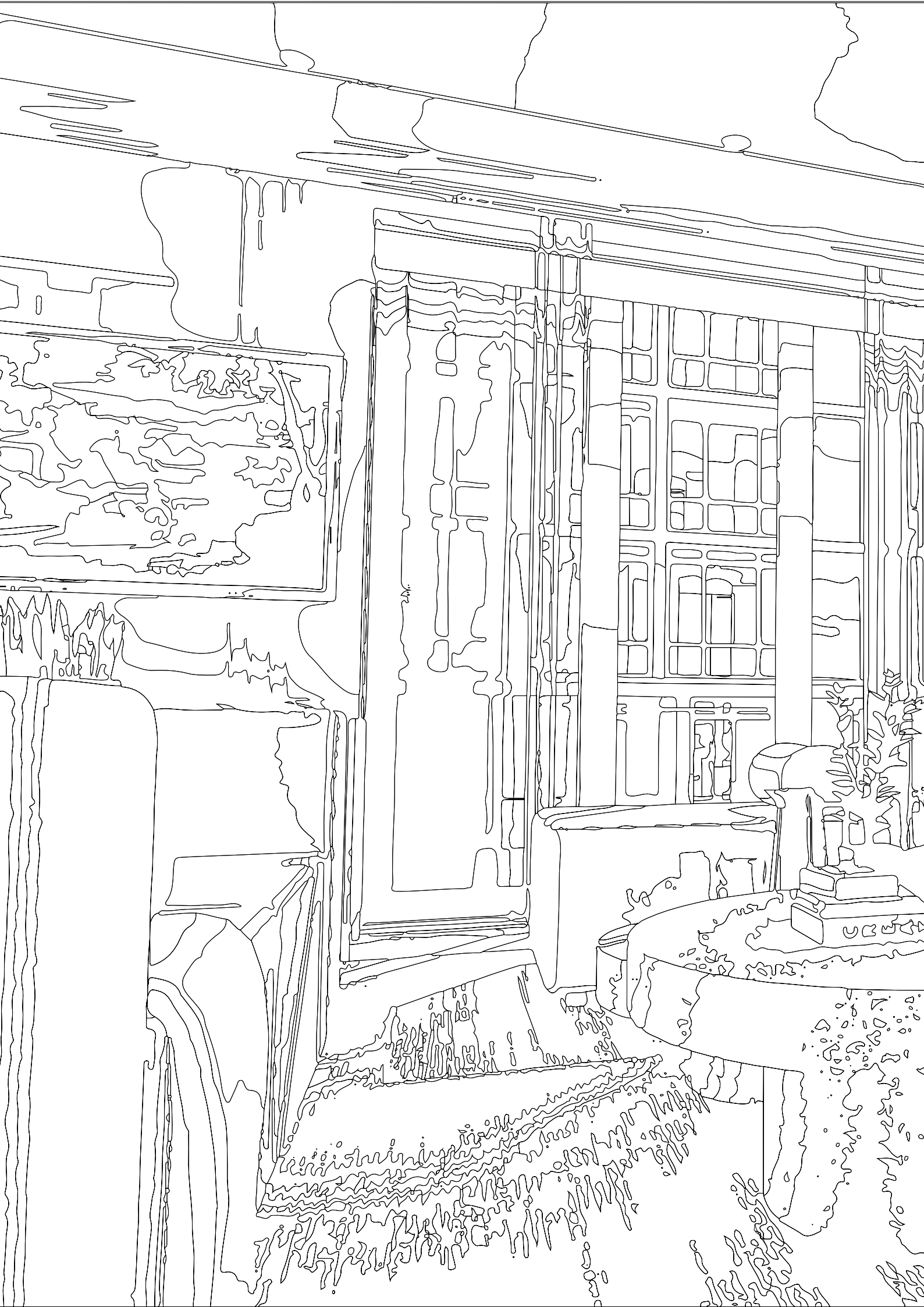
PROJECT BOOK

technical
drawings and
specifications



sustainable
alternatives
and their true
worth







04

context

- index
- introduction
- meet the designer

08

analysis

- location
- apartment
- personalism

16

layout

- brainstorming
- layout
- function

24

sustainability

- timeless
- materials
- transport

26

furniture

- custom design
- loose furniture
- summary

44

realistic visuals

- kitchen
- living room
- hallway
- office
- bedroom
- bathroom

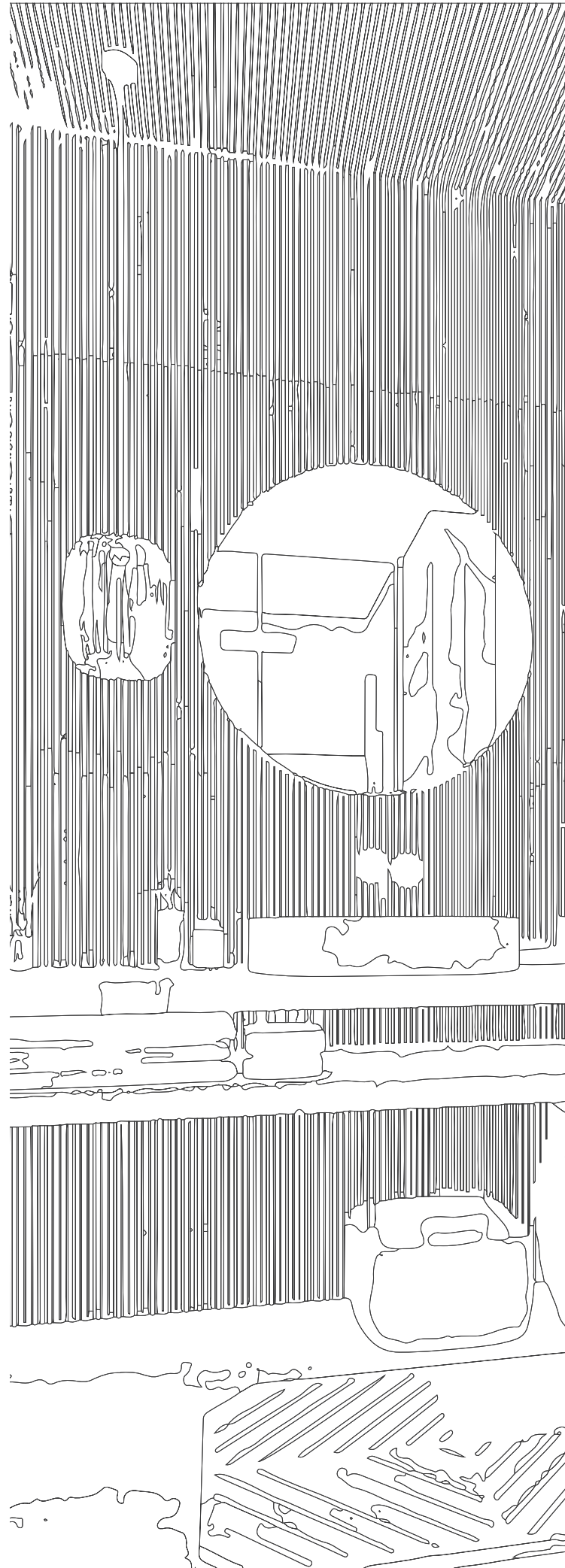
80

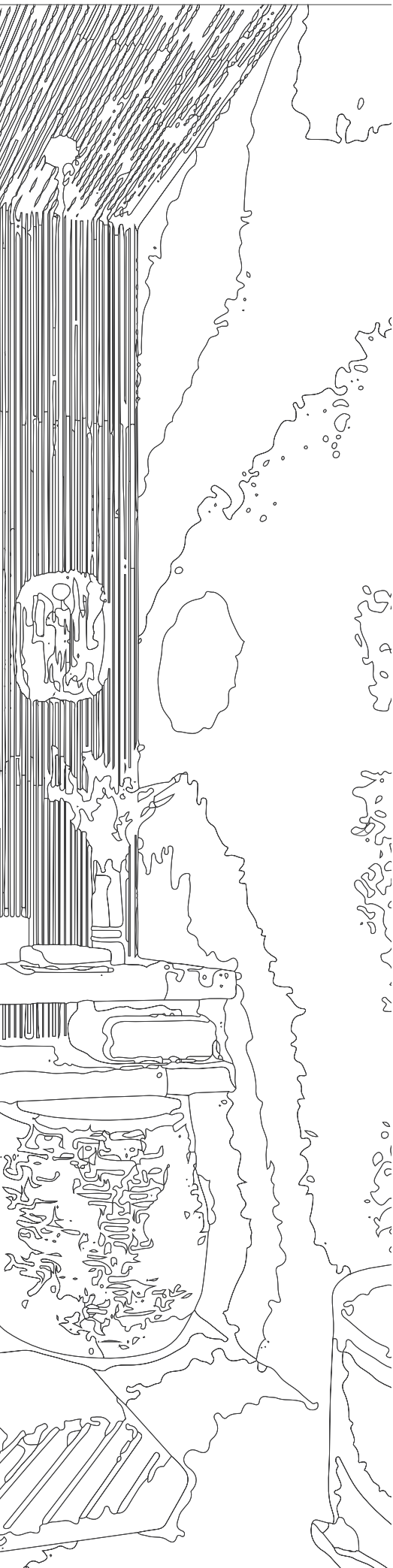
thank you

- thank you text

introduction

This project presents possibilities for apartments. The apartment chosen in this project is one of many newly built apartments available on the market for young people. It is a great trouble for young people to find fitting housing for their needs, hobbies, and personalities. This is not only because the price of new buildings is unbelievably high, but also because the location or one's needs may not provide the space they desire. In this project, the objective is to create a timeless design with sustainable choices while keeping the client's favorite styles in mind. In practice, it is very complicated and often expensive to use sustainable solutions. However, this project introduces alternatives that anyone can include in their own house or next project. Sustainability can be defined in many ways, and of course, simply applying natural materials can cause more carbon emissions than "toxic" materials. This will be explained in more detail in the following chapters, where you can find the reasoning behind the argument. In this book, you can find everything from the first steps of analysis to the last steps of planning the construction and visible budget management.





Viktorija Design, or vi.de as we like to call it, was created with the most marketable name in mind. My mission is to bring your dreams to life even before they are sketched on paper, allowing you to visualize your desired design in a 3D environment and experience the space you could live in before the project begins.

I strive to expand perspectives on space design, emphasizing that it should not rely solely on individual furniture or accessory items. Let the space speak for itself and embrace its imperfections with unique designs. Don't limit yourself to trendy furniture pieces; create your own distinctive style.

The reason to choose my designs and services is straightforward. I aim for the highest quality designs and products with the least emissions. Think of recycled materials or sustainable, multifunctional furniture that not only adds character to your space but also benefits the environment. My only limitation is my imagination, and I am here to help you overcome it.

VIDE

ana- lysis

LOCATION



Imagine how fantastic it would be to live here: in a sustainable, newly built apartment by the Vliet. All amenities within walking or biking distance. In just a five-minute walk, you can find yourself in the heart of Leidschendam at the charming, historic Sluis.

Choosing Triadome means opting for comfortable living in an apartment, garden loft (2-level), or penthouse. Conveniently positioned for sunlight, energy-efficient, with plenty of green space and water, a welcoming public area, and a semi-underground parking garage.

On the upper levels of the residential buildings at Triadome, recessed facades have been incorporated to impart a sense of airiness to the architecture. Simultaneously, this design approach allows for the creation of larger apartments and penthouses featuring spacious terraces adorned with hanging greenery, offering breathtaking views over the water. The choice of materials prioritizes quality, evident from the outset in the double-height entrance halls that provide a grand arrival experience.



Innovative features such as the 'Bringme Box' are installed in the central halls—a digital concierge system housed in elegantly designed cabinets. Each residence has a personalized mailbox with additional package compartments, all managed through a dedicated app for residents' convenience. The seamless floor-to-ceiling windows throughout ensure unobstructed views, framing vistas of the landscaped gardens abundant with greenery.

Many of the apartments and penthouses are oriented towards the Vliet, with the buildings stepping back and featuring progressive setbacks. Each higher setback reveals more green terraces until reaching the expansive penthouses, some of which span up to 280 square meters—larger than typical projects. The garden areas are semi-public, designed with varied sightlines and gathering spots, fostering opportunities for social interaction and relaxation.

analysis

LOCATION

The apartment features a spacious living room combined with a kitchen and dining area, creating an open and inviting space perfect for both everyday living and entertaining guests. This large area is versatile, providing ample room to add a workspace or a play area for children or pets, catering to various needs and lifestyles.

The hallway serves as the central artery of the apartment, connecting to two distinct bedrooms. The smaller bedroom, with a floor area of 13.23 square meters, is cozy yet functional. It includes one door and a large window that allows plenty of natural light to flood the room, making it a bright and pleasant space. This room could be ideal for a child, a guest, or as a home office.

The larger bedroom, spanning 19.27 square meters, offers a more spacious retreat. It features a door, a tall and wide window, and an additional tall but slightly smaller window, ensuring the room is well-lit and airy. Unlike the smaller bedroom, the windows in the larger bedroom do not provide access to the balcony, enhancing privacy. This room's generous size allows for various furniture arrangements and includes enough space for a seating area or a dressing corner.



DE VLIET
ONE MINUTE AWAY



GROCERY STORE
TWO MINUTES AWAY



RESTAURANT
FRATELLI
SEVEN MINUTES AWAY



DE SLUIS
TWO MINUTES AWAY



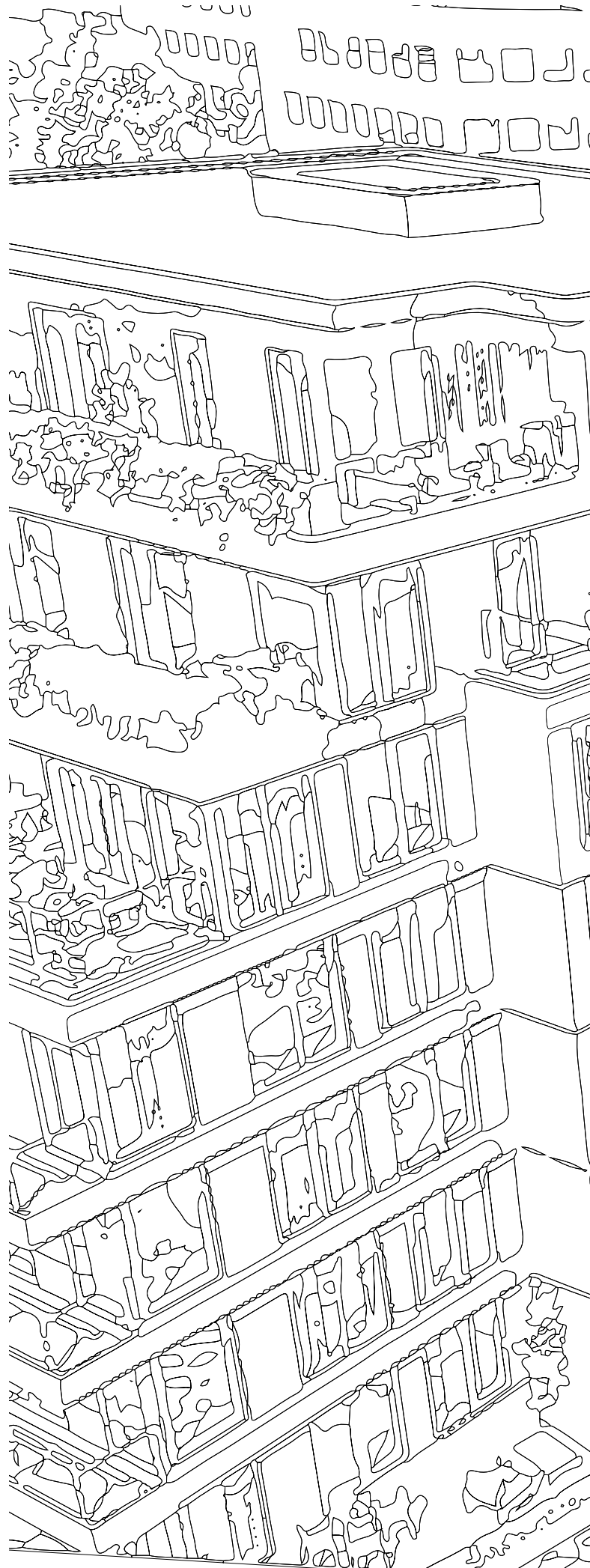
TRAM STOP
VOORBURG
SIX MINUTES AWAY

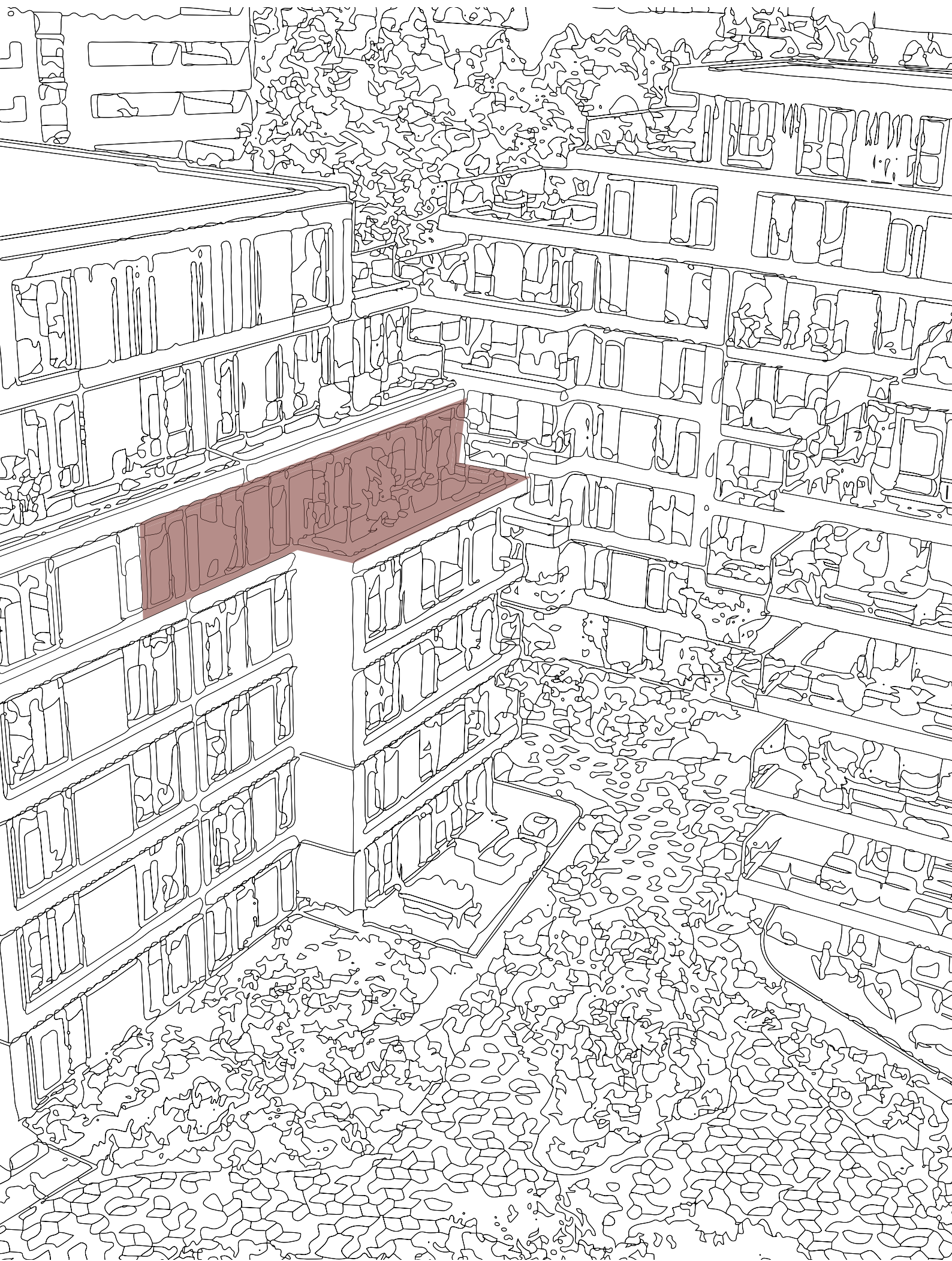


MALL OF THE
NETHERLANDS
SEVEN MINUTES AWAY

The apartment's design thoughtfully separates the living and private areas, ensuring privacy and convenience. The hallway also connects to a small, 1.20 square meter toilet and a larger, 6.56 square meter bathroom. The larger bathroom is well-equipped, featuring a toilet, a bathtub or shower, and sufficient space for additional storage or a vanity unit. This dual toilet setup is particularly convenient, as it provides one bathroom closer to the front door, typically designated for guests, while the larger bathroom remains private for the residents' use.

Moreover, the small bedroom has the added advantage of direct access to the balcony. This feature makes it a versatile space, perfect for those who enjoy having a private outdoor area for relaxation, gardening, or enjoying a morning coffee. In contrast, the larger bedroom, although not connected to the balcony, benefits from larger windows that offer expansive views and contribute to a serene and restful atmosphere.





analysis

APARTMENT

LIVING SPACE/ KITCHEN

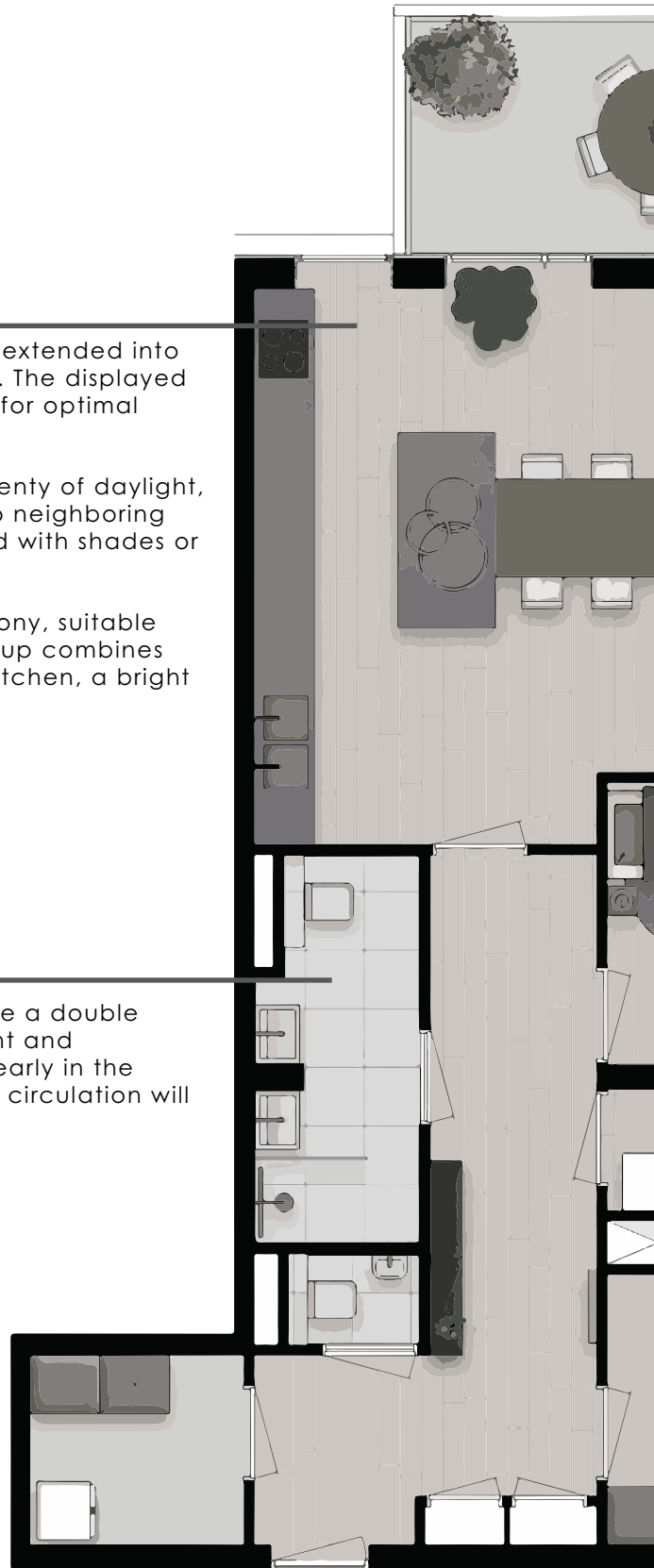
The kitchen is a spacious 4 square meters and can be extended into the living area or arranged throughout the apartment. The displayed location is recommended by the building's architects for optimal functionality.

The living area features large windows that provide plenty of daylight, creating a luxurious feel. However, the direct view into neighboring flats can compromise privacy, which can be mitigated with shades or automatic curtains.

A glass door from the living room leads to a long balcony, suitable for a table for five or relaxing outdoor seating. This setup combines practicality with elegance, offering a well-designed kitchen, a bright and flexible living space, and a functional balcony.

BATHROOM

The bathroom is a spacious area that can accommodate a double sink, a shower, and a toilet. However, it lacks natural light and ventilation options. With only a single door positioned nearly in the middle of the front wall, ensuring proper lighting and air circulation will be essential considerations for this room.





SPACE	WINDOWS	DOORS	M ²
LIVING SPACE	5	3	40,5
KITCHEN	1	0	3,4
HALLWAY	0	8	14,7
BALCONY	6	2	13,5
BATHROOM	0	1	6,1
TOILET	0	1	2,5
SMALL BEDROOM	1	1	13,6
LARGE BEDROOM	2	1	19,7
STORAGE SPACES	0	2	5,5

* kitchen and the living space are combined but for clear picture were calculated separately.

SMALL BEDROOM

The small bedroom, spanning 14 square meters, offers versatility as it can serve as a bedroom or be repurposed into a guest room or office. It is spacious enough to comfortably accommodate two people as an office or serve as a cozy living space for one person. The room features a tall window located at the end of the room, facing the balcony's end, ensuring ample natural light and a pleasant view.

MASTER BEDROOM

The master bedroom is exceptionally spacious, covering 20 square meters, providing ample room to create a comfortable and tranquil space for nightly rest. Two tall windows fill the room with natural light, enhancing its airy and inviting atmosphere. This generous size allows for the inclusion of luxurious amenities such as a sizable closet and a dedicated makeup stand, ensuring both functionality and elegance within the bedroom.

ana- lysis

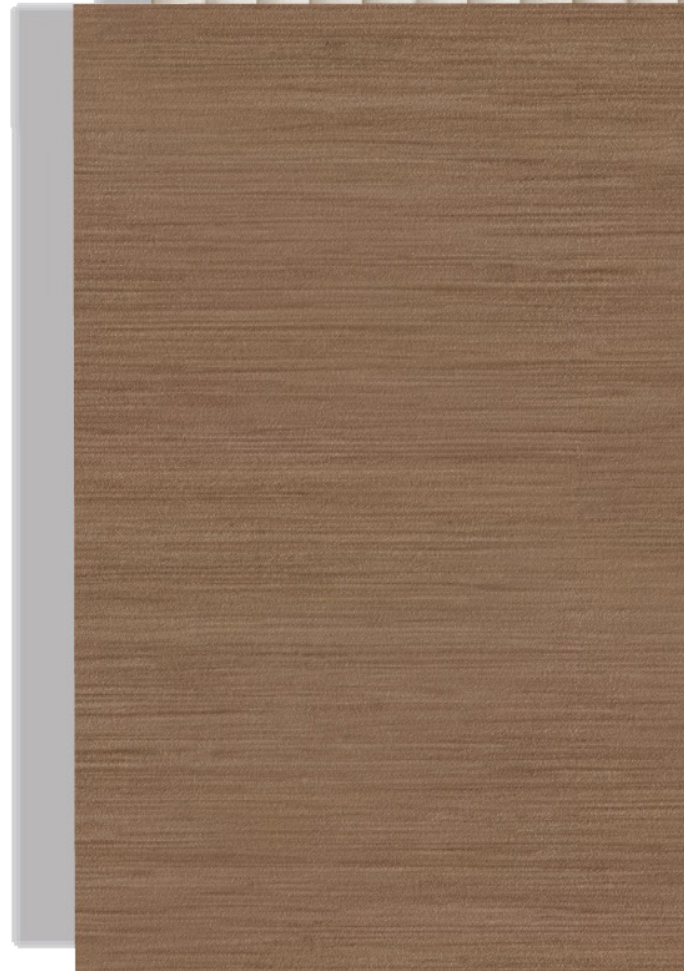
STYLE

Every room has a distinct touch that gives it its own character, yet there is still a connection between colors, materials, and shapes. This creates balance throughout the entire home and maintains the same style across all rooms. This consistent style was specifically requested by my clients, and I achieve it through a thoughtful selection of materials, colors, and forms that frequently reappear throughout the design.

The dominant material in the entire home is wood, with oak being the most frequently used. Natural brown tones are combined with white from cotton or wool, creating a warm and inviting atmosphere. Wood is a sustainable material that lasts long when properly maintained, and sustainability is one of the priorities within this home. The use of wood not only adds to the aesthetic appeal but also supports an eco-friendly lifestyle, aligning with the values of my clients.

Japandi and minimalism are the chosen styles for this project. Japandi is a blend of Japanese and Scandinavian design elements, characterized by simplicity, functionality, and the use of natural materials. Upon further investigation, you will learn that Japandi uses a lot of wood. From the name, you can already understand that it includes Japanese style, as Japan is known for its use of wood. This is evident not only in their interior design but also in their architecture, which has a cultural history as well as geographical reasons. The Japanese appreciation for natural materials and craftsmanship is combined with the Scandinavian emphasis on simplicity and functionality.

Minimalism fits well with Japandi; they work perfectly together and are often combined. With minimalism, I aim to give the client a space that looks clean and stays that way. With enough closed storage spaces, there is no need for clutter to be left out in the open. Storage spaces can also be designed to look like wall decorations, providing beautiful decor with good functionality. This approach ensures that each item has its place, contributing to a tidy and organized home.

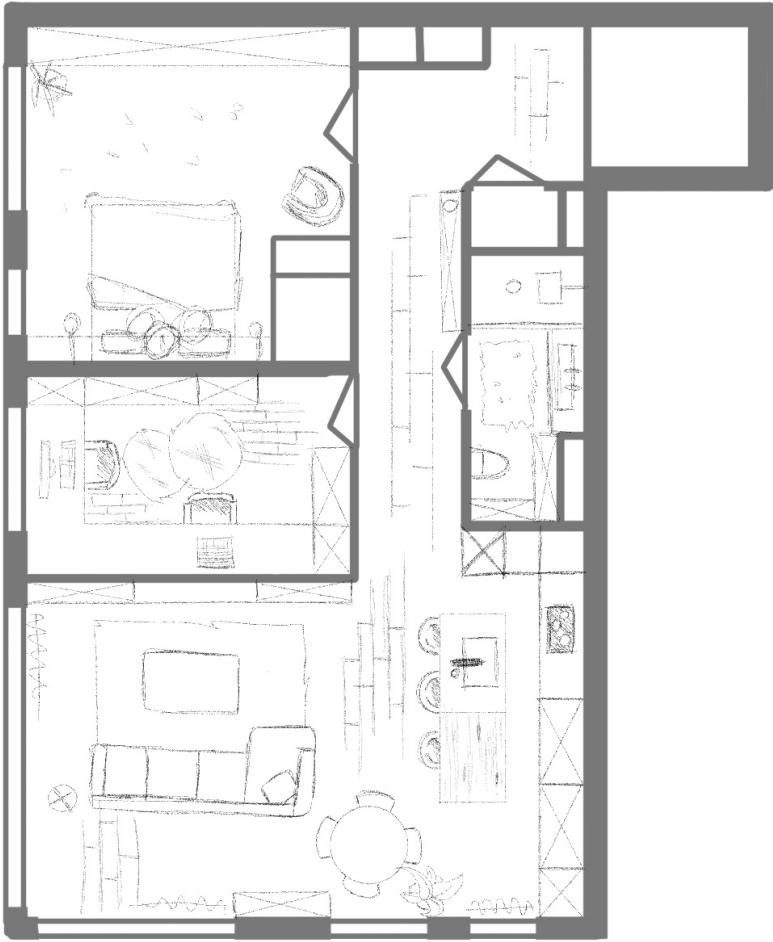


STUDIO BETON

Ultimately, the goal is to create a living space that meets the clients' needs and desires while maintaining a sense of harmony and balance. By combining Japandi and minimalist design principles, the home achieves a perfect blend of simplicity, functionality, and natural beauty. This thoughtful approach to design ensures that the home is a true reflection of the clients' vision, providing a space that is both aesthetically pleasing and comfortable to live in.

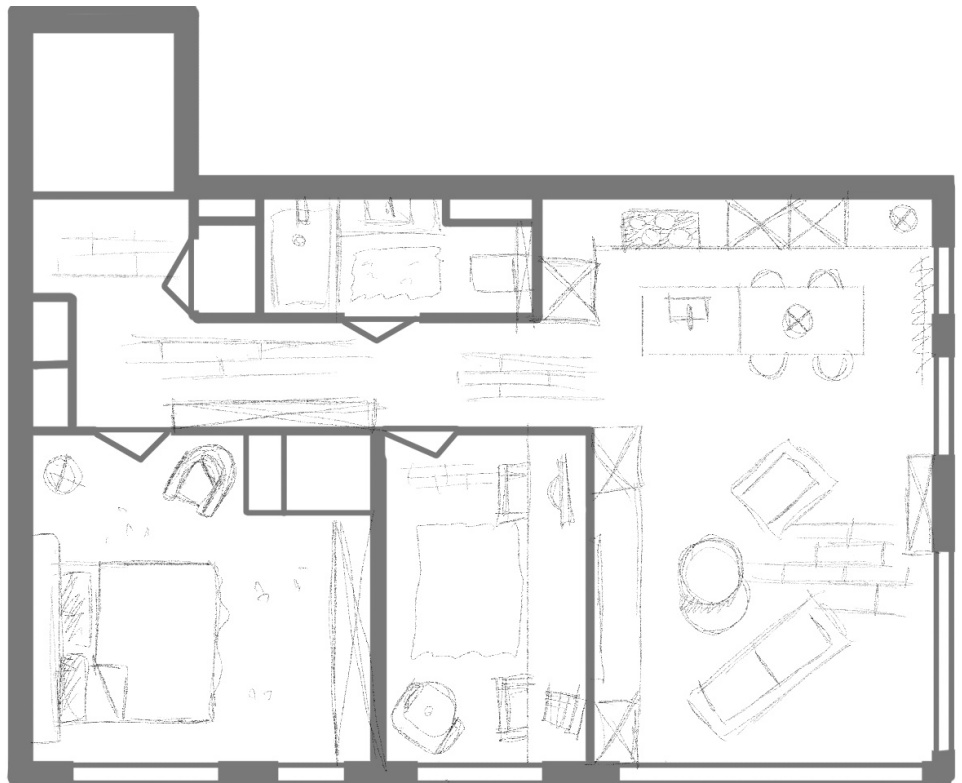


layout BRAINSTORMING



The kitchen and dining area are one, which can be achieved with a small kitchen island and an adjacent table, or a long island with kitchen stools beside it. A multifunctional island seems to be the best option for this concept. If the dining area and kitchen are combined, the rest of the room can focus on comfort and relaxation. The living room is located next to the kitchen and dining room. A block to place sofas, a TV cabinet with a TV, and perhaps some armchairs. This creates a nice balance in this large room and can serve multiple purposes. The decision to combine the kitchen and dining room can be reinforced by another reason. If my clients want to host a gathering, they will have much more space. Instead of moving a table aside, they can slide a few stools and use the long bar as a table or bar. So, it serves as a multifunctional kitchen and living room. Furthermore, as we walk towards the office, you can see how the table would span from one wall to the other. A simple long table. Storage would be behind the table with enough space to walk and sit so that two people can work comfortably without obstruction. This setup seems nice to me but not exciting enough. It also provides the minimum storage space for an office area. In the bedroom, I placed the bed at the back of the room because no one likes to look at the door when they go to sleep, and during summer, light comes in, which makes it difficult to sleep during the day. This can be managed with blinds, but I still think the back wall is best for the bed in terms of privacy and light exposure.

Maybe putting this on paper will give me a new and more enjoyable idea for one of the spaces. The kitchen and dining area are now two separate spots in this room, which allows for more space for dining but takes away the flexibility in planning. Additionally, the living room has only become about 15% smaller because the dining area has been added. It doesn't cost much, but it can be annoying when placing an L or U-shaped sofa. The concept for the office has remained almost the same, but instead of a straight table, I've added a corner for more table space. The bedroom has been completely reversed; this is an idea I didn't want to implement, and now that I've drawn it, I'm sure it's not going to work. I don't like the position of the bed and wardrobes, so I'd prefer to stick with the first layout instead of this.



COMBINED RESULT

For the final layout, I chose to combine design elements from multiple sketches, also taking into account the dilemmas surrounding large windows. Large windows can allow sunlight to flow inside, which can cause issues with sleep or watching TV. To address this, I incorporated solutions such as strategic placement of furniture and the use of blinds or curtains to manage light flow effectively.

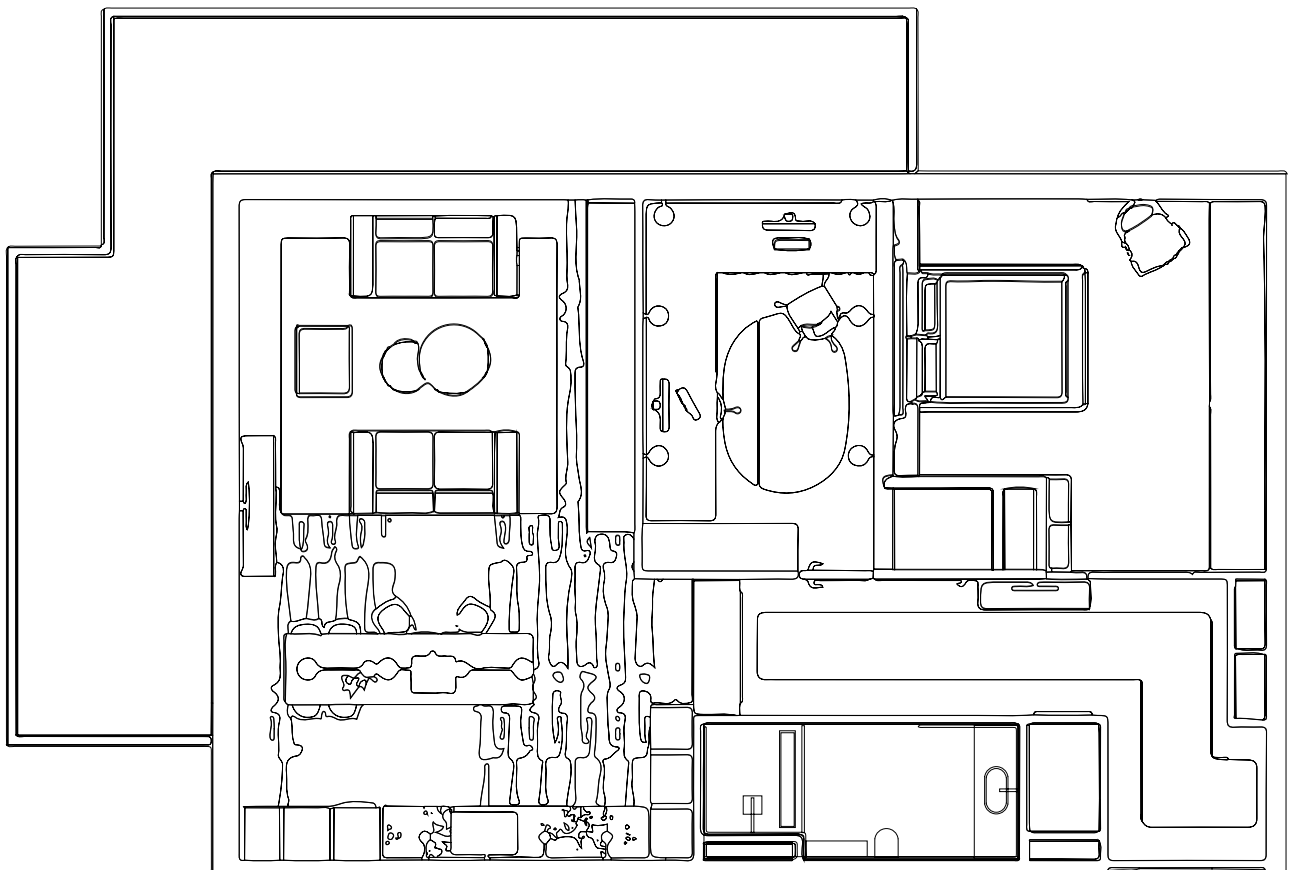
The kitchen and dining area were combined to create a more open and functional space. This is evident with the bar top and six chairs, making the kitchen both a cooking and a socializing area. The kitchen is spacious and comfortable, providing ample room for people to cook or bake together. The large island serves multiple purposes: it can be used for dining, as a buffet, or for additional workspace. This multifunctional island is very handy, offering the benefits of a dining table while taking up less space.

The office is situated in the small bedroom and is designed with a long table to facilitate work. This layout allows two people to work comfortably side by side, with enough space to accommodate two additional people if necessary. The long table provides ample surface area for computers, documents, and other work materials, making it an ideal setup for productivity.

Each room in the house is equipped with a lot of sealed storage options, which helps in keeping the spaces organized and clutter-free. These storage solutions are designed to be both functional and aesthetically pleasing, ensuring that items can be easily stored away when not in use. This approach not only keeps the house looking clean but also makes it much easier to maintain that cleanliness over time.

The living room is designed to be a cozy and inviting space, with careful consideration given to the placement of furniture to ensure comfort and functionality. The combination of vintage and Nordic design elements, as seen in the black lacquered steel wall lamps, adds a stylish touch to the room. These lamps, finished with RAL 9004 powder coating and a matte finish, provide adjustable lighting to create the perfect ambiance.

In summary, this final layout combines practicality with style, addressing the challenges posed by large windows and maximizing the functionality of each space. By integrating multifunctional furniture, ample storage, and thoughtful design elements, the house is both comfortable and efficient, making it a perfect living environment.



layout FINAL CHOICE

LIVING SPACE/ KITCHEN

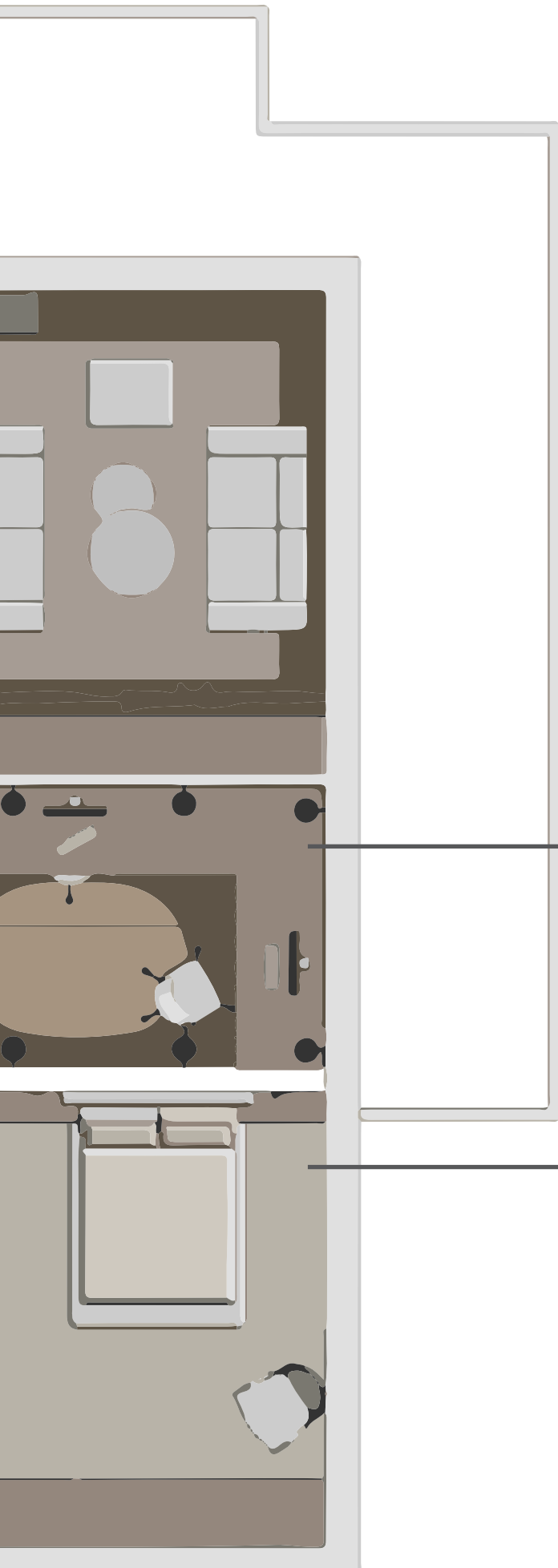
The kitchen is made out of recycled plywood, which is laminated to ensure a longer lifespan and easier maintenance. It also makes it cheaper to repair in case of damage and less toxic to the environment. There is ample storage for any type of equipment, from electronics to a dedicated coffee corner. Each storage space is crafted in different sizes to make it easier to store various types of plates or pots.

The living area is connected to the kitchen, providing a fresh view throughout the whole room and allowing more natural light to flow through the house. The living area consists of two sofas and one pouf. If needed, they can be pushed together to create a U-shaped sofa for movie nights or kept apart for comfortable chats with multiple friends. This layout ensures comfort and pleasant posture while chatting.

BATHROOM

The bathroom is crafted from granite coated in a protective layer. On the sink side, there are sound-absorbing timber planks. These are also coated to limit the amount of water entering. The bathroom features an advanced air circulation system, ensuring no moisture buildup and proper ventilation.





SPACE	WINDOWS	DOORS	M ²
LIVING SPACE	5	3	40,5
KITCHEN	1	0	3,4
HALL	0	8	14,7
BALCONY	6	2	13,5
BATHROOM	0	1	6,1
TOILET	0	1	2,5
SMALL BEDROOM	1	1	13,6
LARGE BEDROOM	2	1	19,7
STORAGE SPACES	0	2	5,5

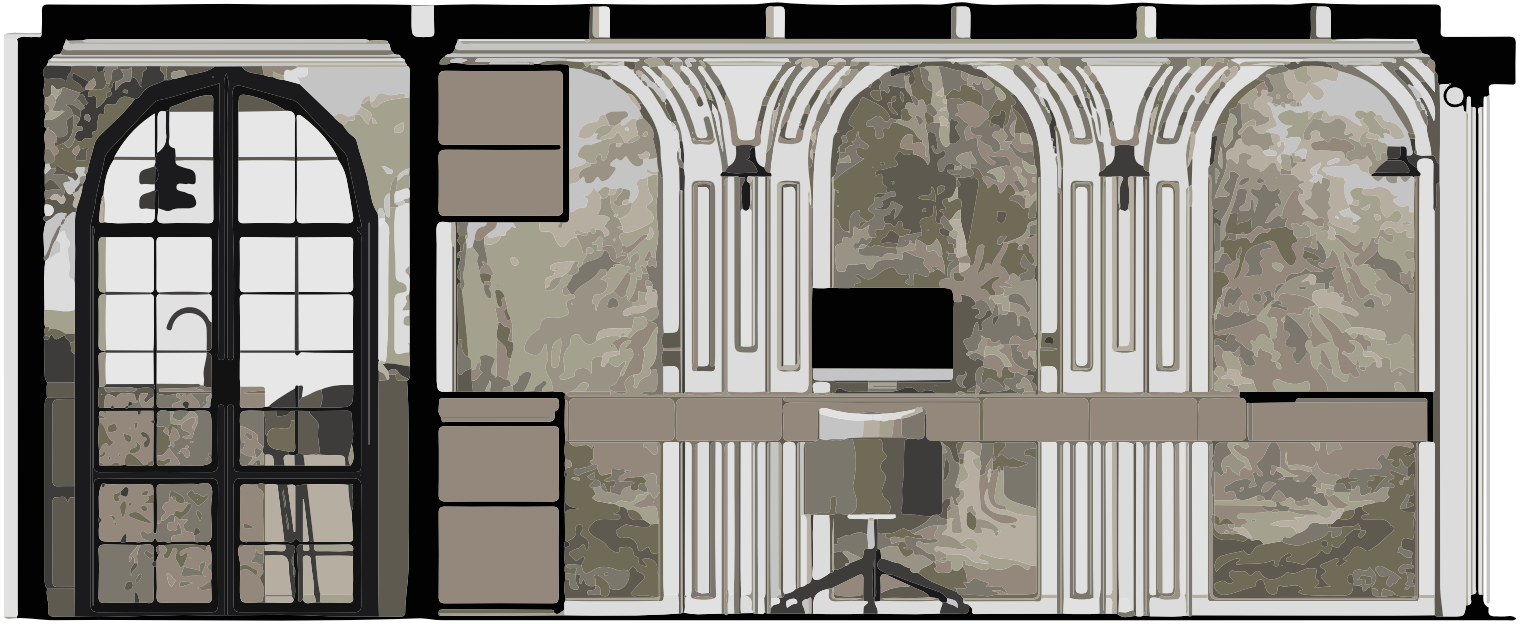
* kitchen and the living space are combined but for clear picture were calculated separately.

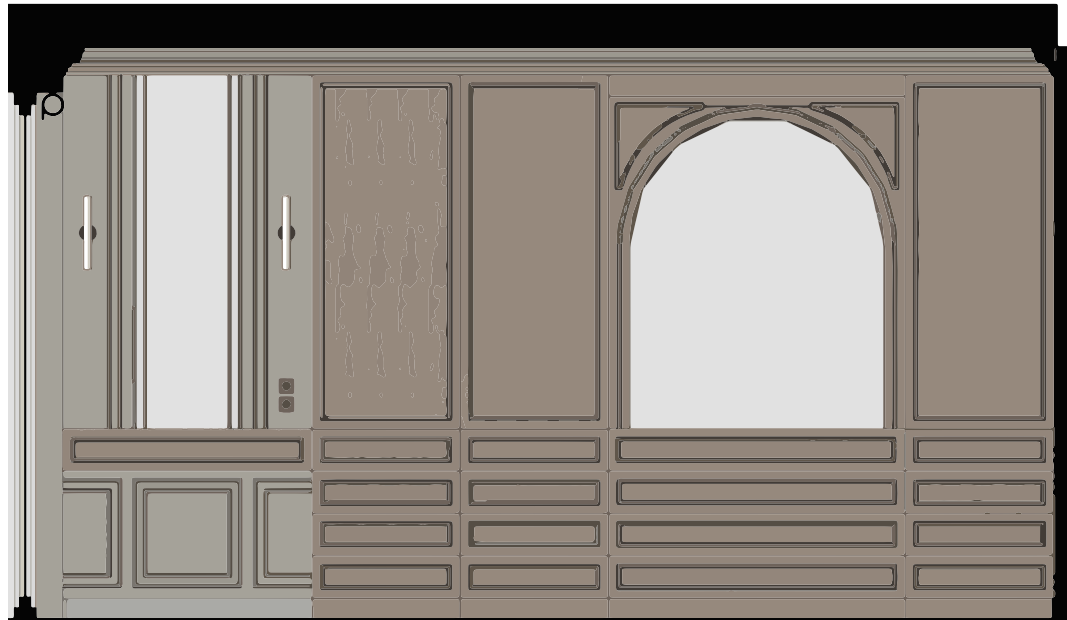
OFFICE

The office has a long working table that is tall enough to be used while standing and can also be used while seated. Underneath, there are shelving systems, and on the side, there is a large bookshelf specifically designed with many designated storage units. Paper, printers, and other small tools can be kept and sorted properly.

MASTER BEDROOM

The master bedroom is the only room in the apartment with soft flooring. Comfortable carpets ensure warmth in the winter and comfort for bare feet. The large bed is connected to a shelving system. Instead of using night tables, we installed large shelves that stretch fully across the walls.





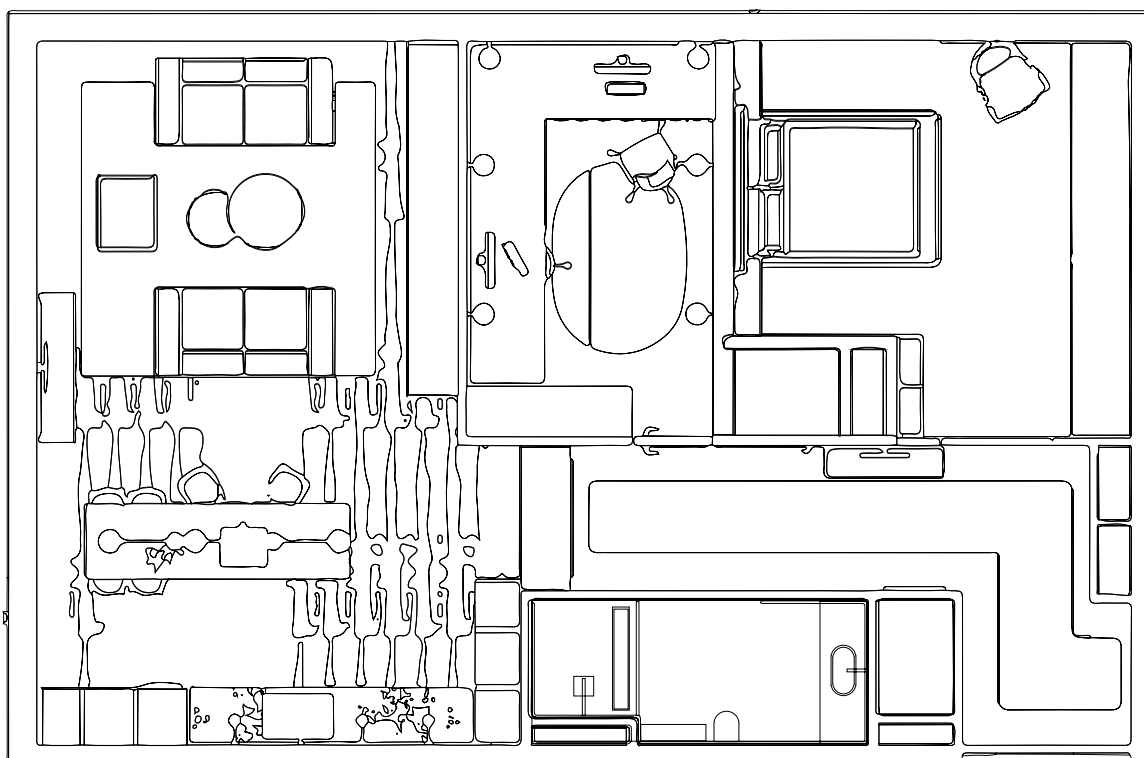
layout FUNCTION

LIVING SPACE

The living area is designed to provide comfort for visitors and can be easily rearranged into a U-shaped sofa for cozy movie nights. It offers ample space for a large group of friends to gather comfortably or for a few friends to lounge and chill out. The versatile layout ensures everyone can enjoy the space, whether chatting, relaxing, or enjoying entertainment together.

OFFICE

The workspace is suitable for both full-time and part-time use, equipped with ample storage for accounting documents or drawing materials. Additionally, it includes a discreet area designed for a printer, accommodating small to medium-sized devices seamlessly.



KITCHEN

The spacious kitchen seamlessly combines with the dining area, making it versatile for two separate occasions. It features abundant storage units that ensure easy organization for various items, enhancing functionality and convenience.

BATHROOM

The bathroom features a large shower with a built-in shelf and an effective ventilation system. The space is large and easy to use, with a well-placed sink that offers ample room. The cool design includes beige granite and wood planks near the sink, creating a stylish and luxurious ambiance.

BEDROOM

The bedroom boasts a high-comfort carpet and soft color scheme throughout. It features a large bed accompanied by long night tables. A spacious closet is provided for two people, accommodating a variety of clothes and accessories. Adjacent to the closet is a designated area for makeup and jewelry storage.





sustainability
alternatives that truly change the world

The design of the house is carefully curated to ensure longevity and reduce the need for frequent changes. Its timeless aesthetic is intended to encourage tenants to maintain the design for extended periods, minimizing the desire for replacements. While smaller decorative elements can be updated seasonally, larger furniture pieces are typically retained even if they were not initially favored.

Custom-made furniture is integrated into the space to complement rather than dominate its character, promoting sustainability by minimizing consumption and reducing landfill waste. This sustainable approach not only benefits the environment but also proves cost-effective for tenants over time. By emphasizing durability and thoughtful design, the house encourages a responsible use of resources and fosters a sense of environmental consciousness among its occupants.

timeless

The materials used throughout the house are primarily natural. The kitchen, TV unit, office desk, and bedroom closet are all constructed from recycled wooden chippings. Plywood, known for its strength and cost-effectiveness in replacement, is chosen for its minimal environmental impact.

In the rest of the house, natural materials such as wood, granite, wool, and cotton are utilized. Concrete is sourced from specific factories (with more sustainable studio concrete planned for future use). These materials not only ensure a healthy indoor environment for occupants but also contribute positively to the planet. They are durable when properly maintained, which reduces the need for frequent replacement and supports sustainable production practices.

This emphasis on natural and recycled materials underscores a commitment to environmental responsibility while creating a comfortable and enduring living space.

materials

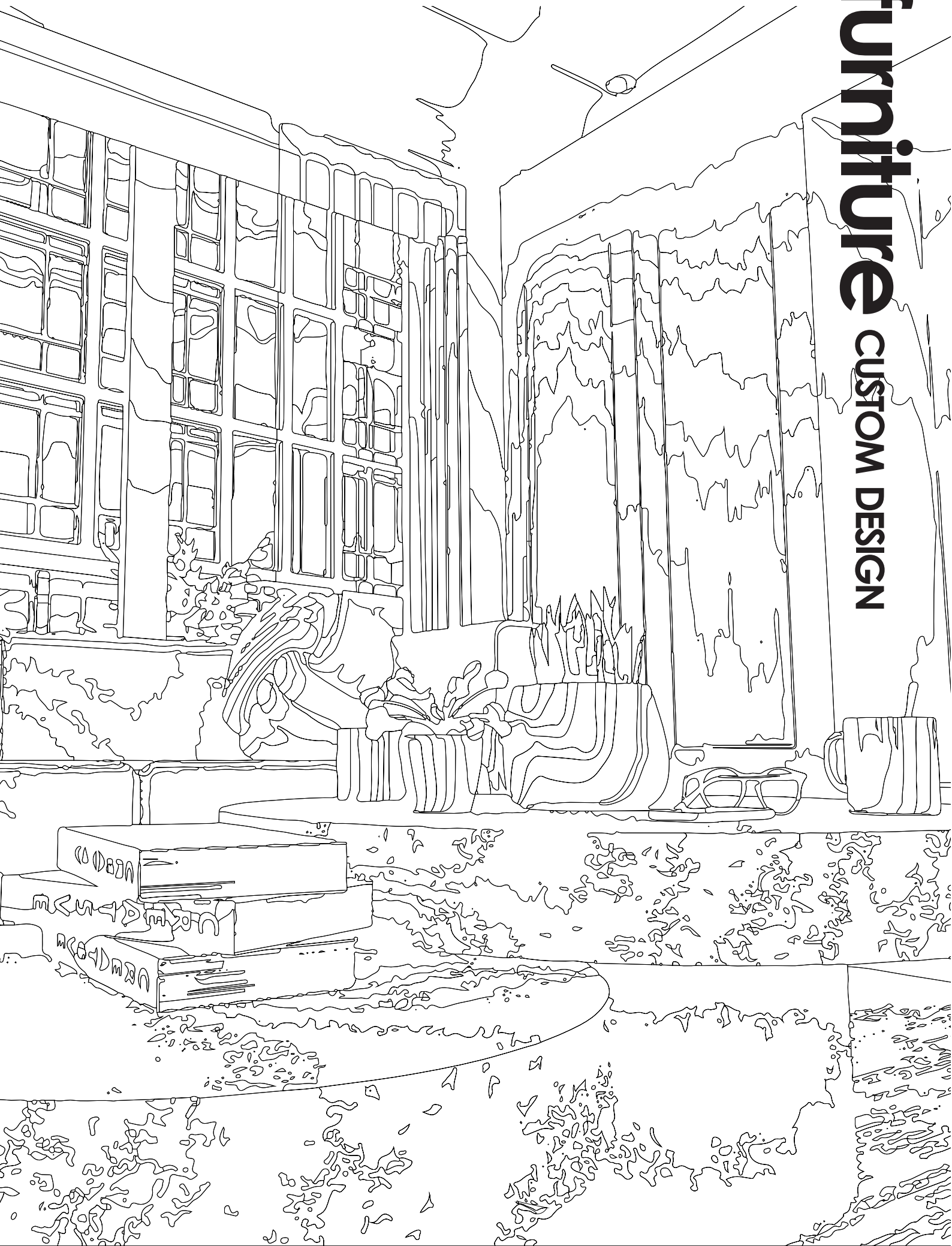
The choice of materials in the house goes beyond being natural or recycled; where they come from is equally important. Materials and furniture pieces have been sourced from local countries surrounding the Netherlands, including England, Germany, Belgium, and of course, the Netherlands itself. This deliberate sourcing ensures high-quality materials and often guarantees that manufacturers adhere to ethical standards, including worker safety laws.

By sourcing locally, the project supports regional economies and reduces the environmental impact associated with long-distance transportation. It also promotes transparency in supply chains, allowing for greater accountability and confidence in the sustainability and ethical practices of the materials used.

This approach not only prioritizes quality and sustainability but also ensures that the house is furnished with materials that align with ethical standards, contributing positively to both the local and global community.

transport

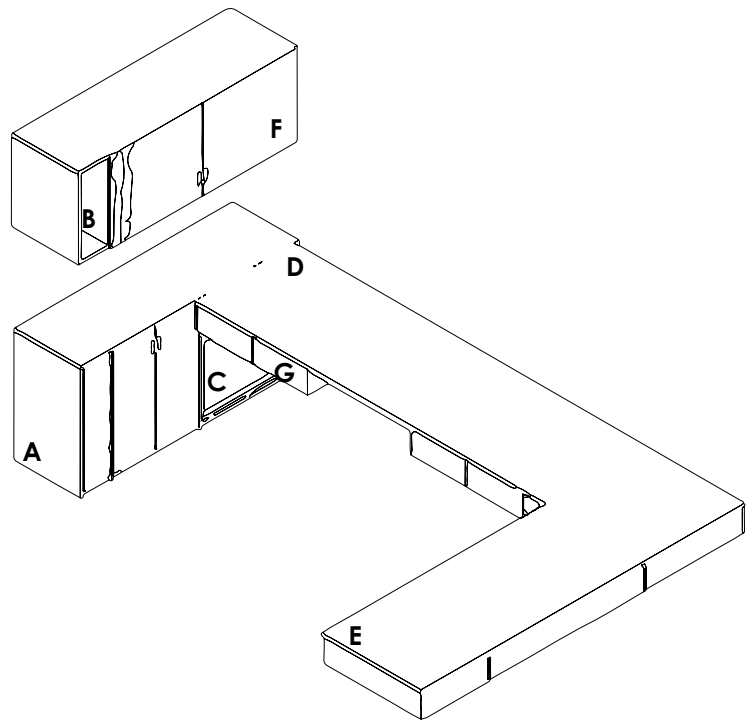
furniture CUSTOM DESIGN



OFFICE DESK

The office desk is meticulously crafted from plywood, renowned for its natural durability and widely favored for custom furniture in diverse interior designs. Its inherent strength effortlessly complements the minimalist and Scandinavian aesthetic of this apartment. Through custom design, we ensure precise dimensions and optimize room utilization, allowing for the creation of efficient and comfortable storage solutions tailored to the space's requirements.

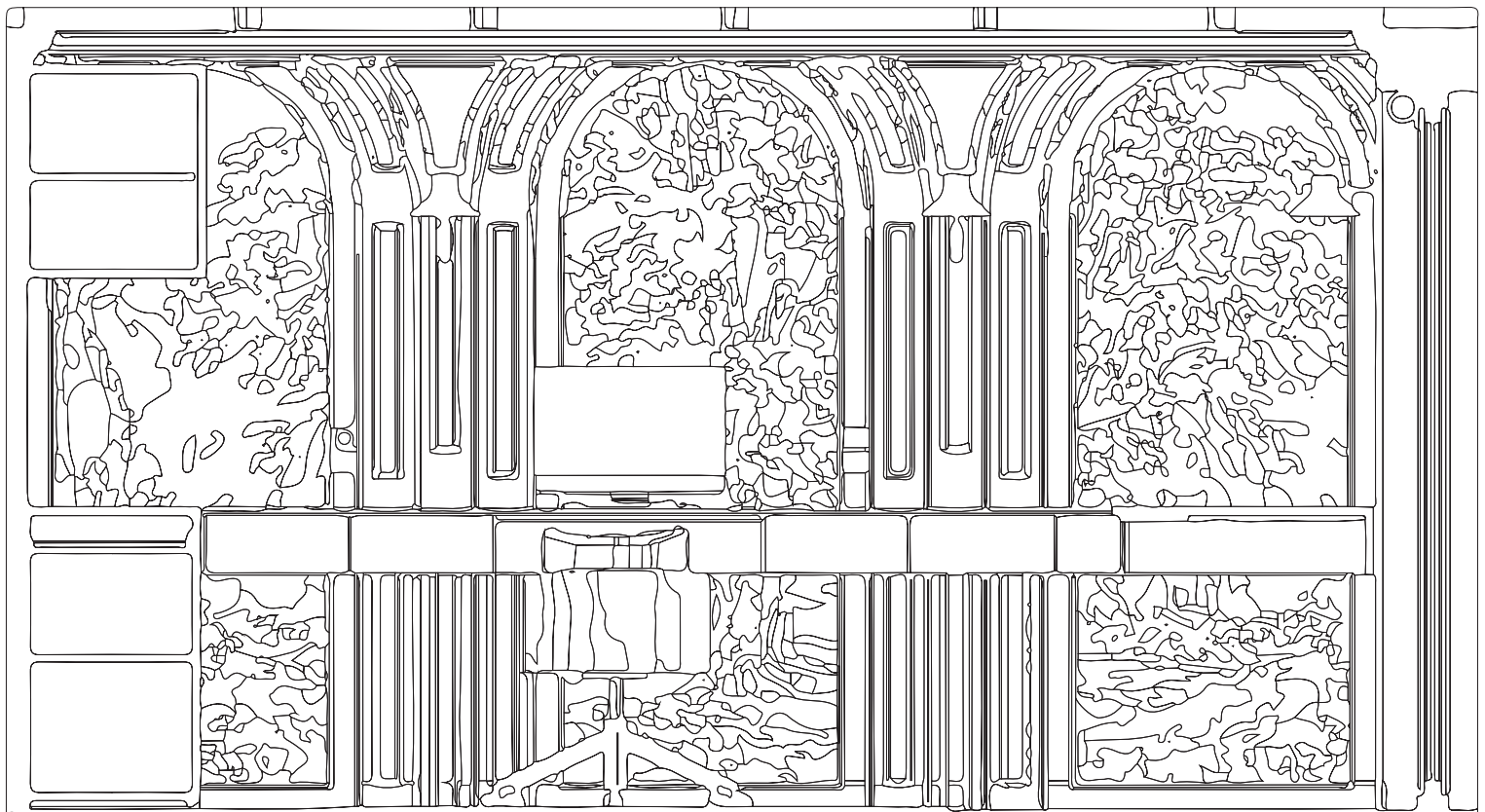
This approach not only enhances functionality but also emphasizes aesthetic harmony. By understanding our clients' exact needs and preferences, we can tailor units to seamlessly integrate into their lifestyle and work environment. This commitment to personalized design ensures that every aspect of the office desk contributes to both practicality and the overall visual appeal of the room, enhancing the quality and experience of the workspace.



SIDE	MATERIAL	FUNCTION
A	PLY BIRCH WOOD	STORAGE
B	PLY BIRCH WOOD	OPEN STORAGE
C	PLY BIRCH WOOD	PRINTER SPACE
D	PLY BIRCH WOOD	WORKTOP
E	PLY BIRCH WOOD	WORKTOP
F	PLY BIRCH WOOD	UPPER STORAGE
G	PLY BIRCH WOOD	SHELVES

The design of the desk is intended to comfortably accommodate two people. The table height has been optimized to offer flexibility for both standing and sitting options while working. Specifically designed cuts on the lower side of the table allow chairs to be fully tucked away, maximizing space efficiency. The open bottom design provides additional functionality, allowing for storage of boxes or easy cleaning without disruption. This thoughtful design not only enhances practicality but also ensures a clean and uncluttered workspace conducive to productivity.

VISUAL | CUSTOM DESIGN IN THE ROOM | FRONT VIEW

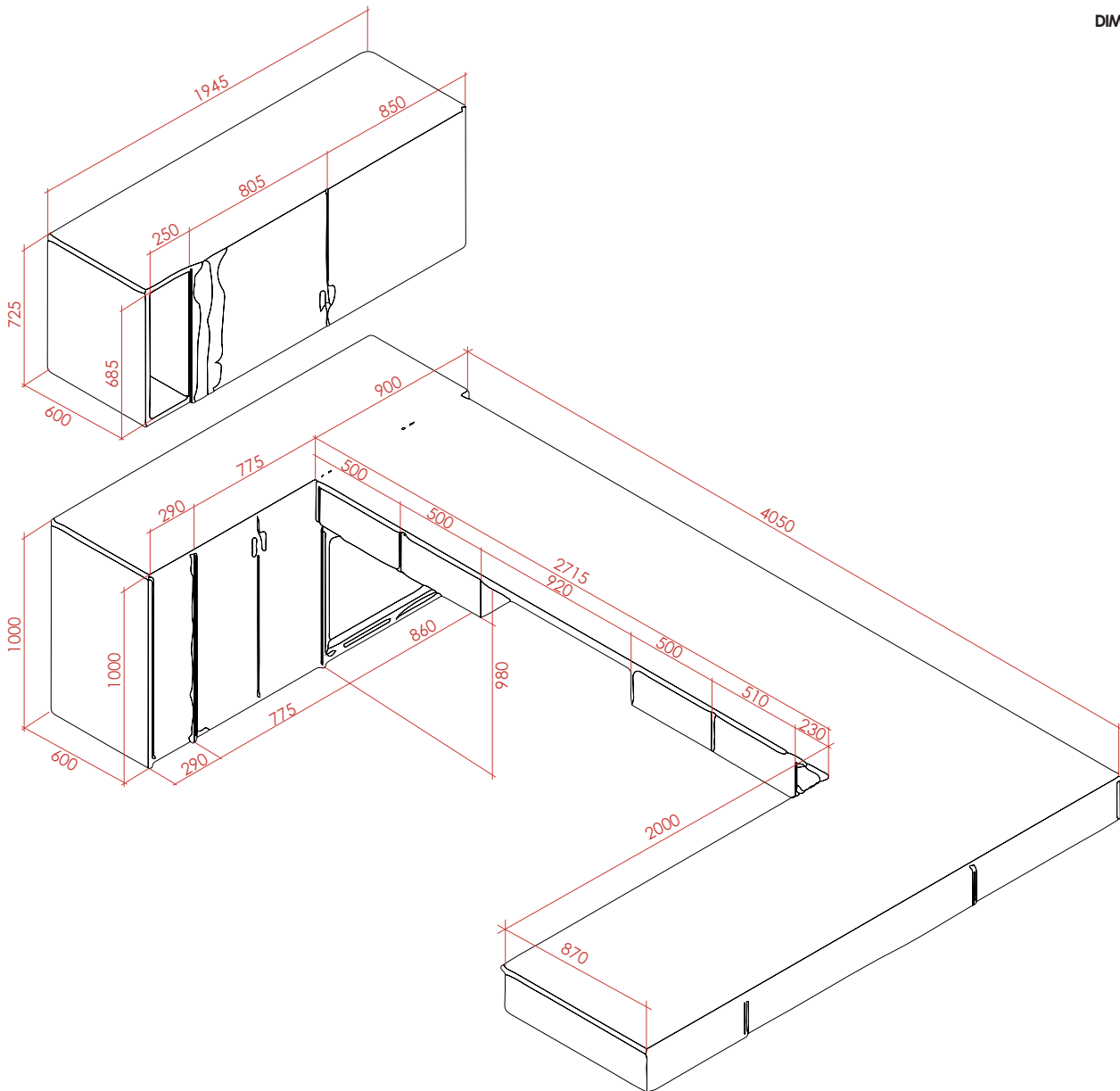


OFFICE DESK

The design has been meticulously crafted to cater to specific functions. The storage unit on the side is generously sized to accommodate numerous boxes and utensils. It includes dedicated compartments for papers, with a sufficient number of shelves ensuring effortless organization without cluttering the desk surface. This thoughtful layout not only optimizes storage space but also promotes a tidy and efficient work environment, enhancing productivity and ease of use.

The dimensions of the desk have been meticulously planned to perfectly fit the room, ensuring optimal use of space. The specific measurements of the seating and storage areas serve practical and organizational purposes, enhancing versatility and functionality. Multiple shelves strategically placed around the desk facilitate easy organization, promoting cleanliness and boosting productivity.

DIMENSIONS IN CM
NOT ON SCALE



With a length of nearly a meter, the desk accommodates multiple technologies simultaneously and allows for the convenient arrangement of several documents at once. The open space between the top storage and bottom section provides a convenient spot for quick paper drops or storage of maps. Additionally, a cork wall will be installed for notes or pinned documents, further enhancing the desk's functionality and organizational capabilities.

This thoughtful design not only maximizes efficiency in workflow but also promotes a tidy and productive workspace conducive to focused work and creativity.

OFFICE FUNCTION

VISUAL | OFFICE

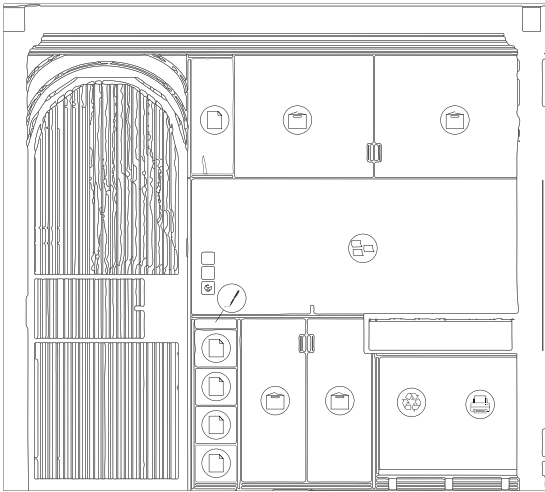


SIDE VIEW

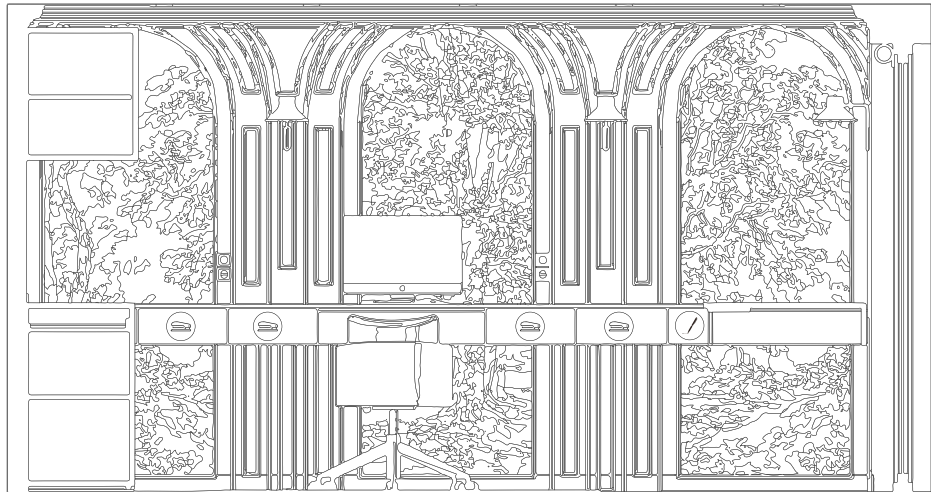


FRONT VIEW

FUNCTION | OFFICE



SIDE VIEW



FRONT VIEW



STORAGE PAPER



RECYCLING



NOTE WALL



LARGE STORAGE



PRINTER



MEDIUM STORAGE



SMALL STORAGE

On this page, you can clearly see the specific locations designated for various storage purposes. This efficient plan ensures the full utilization of every aspect of the design. There are dedicated paper storage areas for loose papers that need sorting, whether temporarily or for long-term organization. Large storage units are strategically placed for accommodating bigger boxes or large items, while medium-sized storage units are conveniently located throughout for easy access and multiple sorting options.

This organized approach not only enhances efficiency but also promotes a tidy and accessible workspace, facilitating smooth operations and effective workflow management.

OFFICE LIGHT

VISUAL | OFFICE

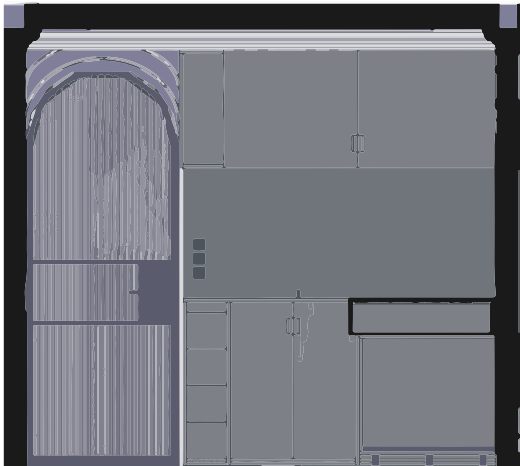


SIDE VIEW

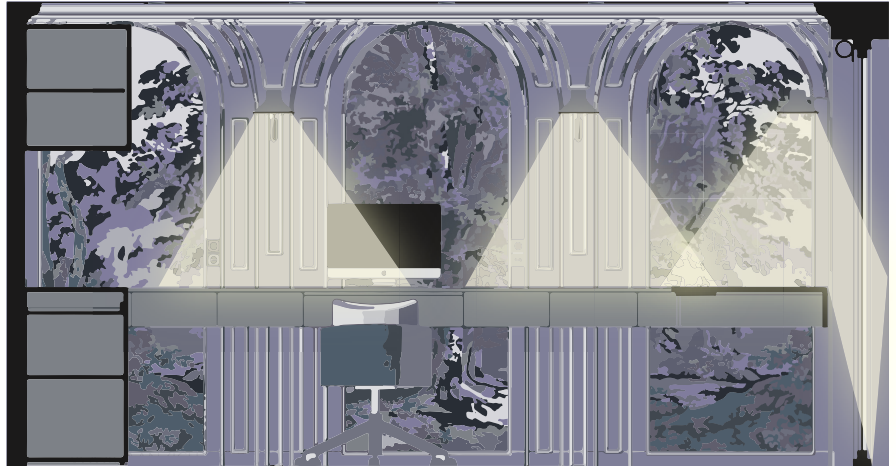


FRONT VIEW

VISUAL | LIGHT IN THE OFFICE



SIDE VIEW



FRONT VIEW

DESCRIPTION



aria

Wall lamp in black lacquered steel. In a vintage and Nordic style. Made of 100% steel and coated with RAL 9004 powder paint. A total of 6 pieces in the office space to create atmospheric lighting during work, adjustable with a dimmer.

+



bulb

Round lamp with white glass. LED with adjustable brightness, 4W maximum power.



ral 9004

Color RAL 9004 is used for lamps, sockets, and dimmers. Each colored object receives a matte finish.

APPLICABLE SYMBOLS

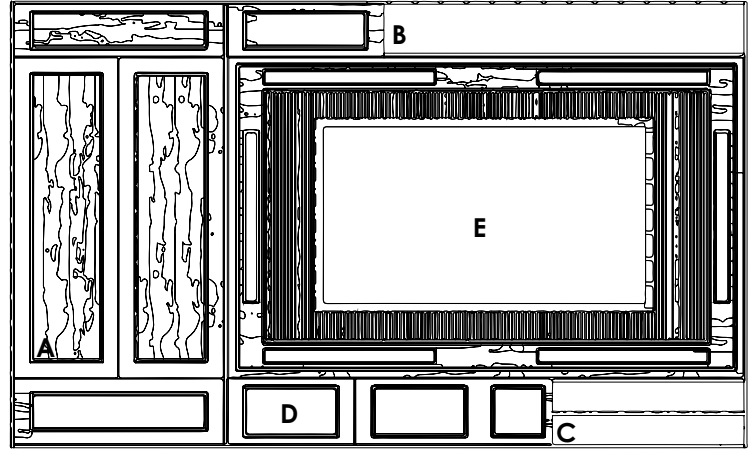


The lighting is strategically positioned to illuminate the working area directly, while ensuring the angles are gentle enough to avoid discomfort during nighttime use. Equipped with LED bulbs, the lighting density can be easily adjusted based on the time of day or personal preference, providing flexibility and optimizing productivity in the workspace.

TV UNIT

The TV unit spans the entire wall in the living area, seamlessly complementing the space rather than overpowering it. It features several open shelves for decorations and closed compartments for storing large or medium-sized items. Crafted entirely from plywood, the unit creates a cohesive look throughout the room.

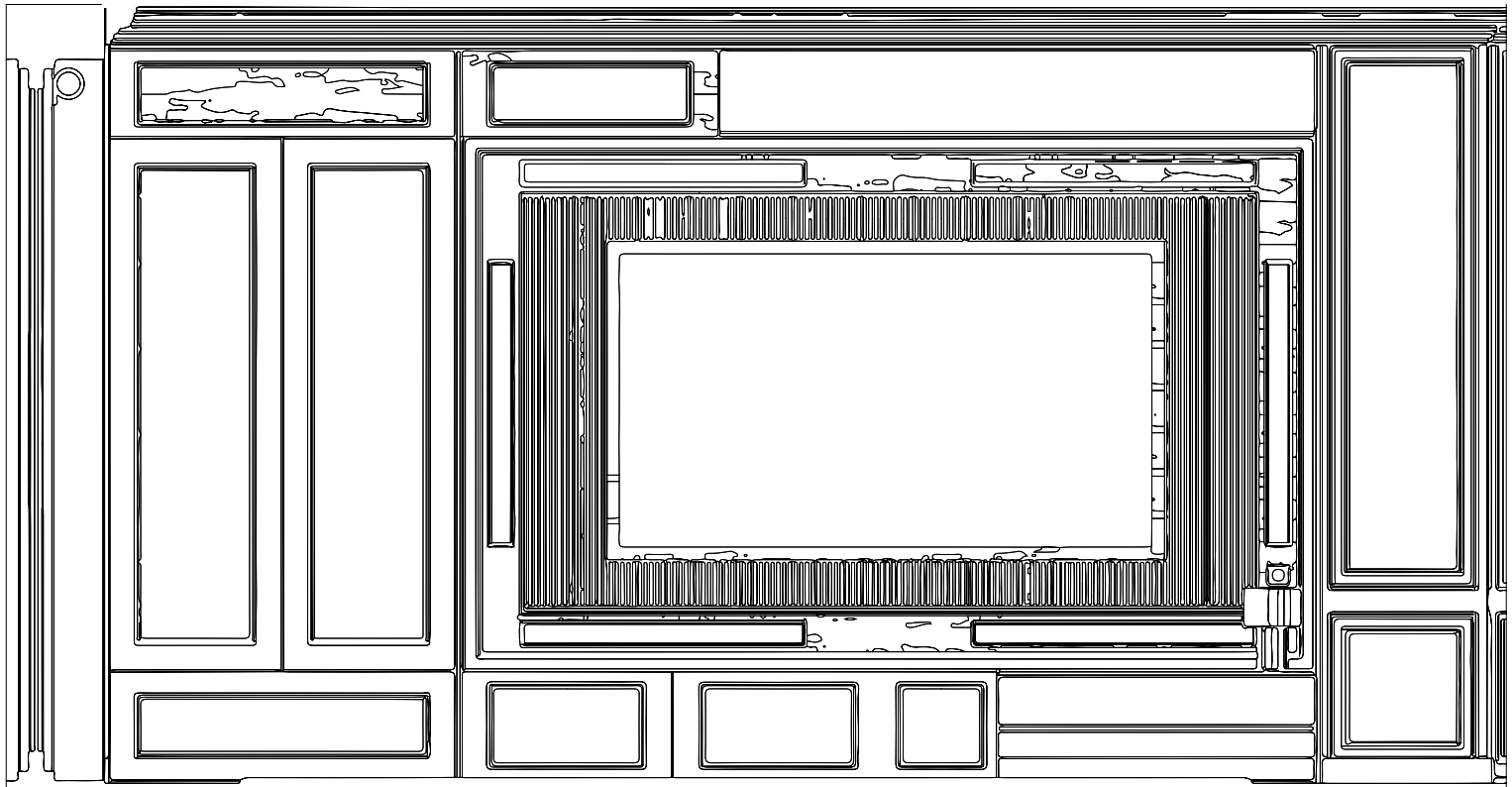
The tiles surrounding the TV are made from concrete, similar to those used in the kitchen, establishing a visual connection between the living area and kitchen spaces. This design choice enhances continuity and harmony within the home, creating a unified and aesthetically pleasing environment.



SIDE	MATERIAL	FUNCTION
A	PLY BIRCH WOOD	STORAGE
B	PLY BIRCH WOOD	OPEN STORAGE
C	PLY BIRCH WOOD	SMALL OPEN STORAGE
D	PLY BIRCH WOOD	SMALL STORAGE
E	PLY BIRCH WOOD	SPACE FOR TV

The TV unit is designed to be versatile and adaptable to personal preferences. There are no designated locations for items, allowing users to arrange everything according to their desires. While the open areas are ideal for decorative items, I recommend keeping these spaces reserved solely for decorations to maintain a clean and organized appearance. This approach not only enhances flexibility but also ensures the unit serves both functional and aesthetic purposes seamlessly.

VISUAL | CUSTOM DESIGN IN THE ROOM | FRONT VIEW

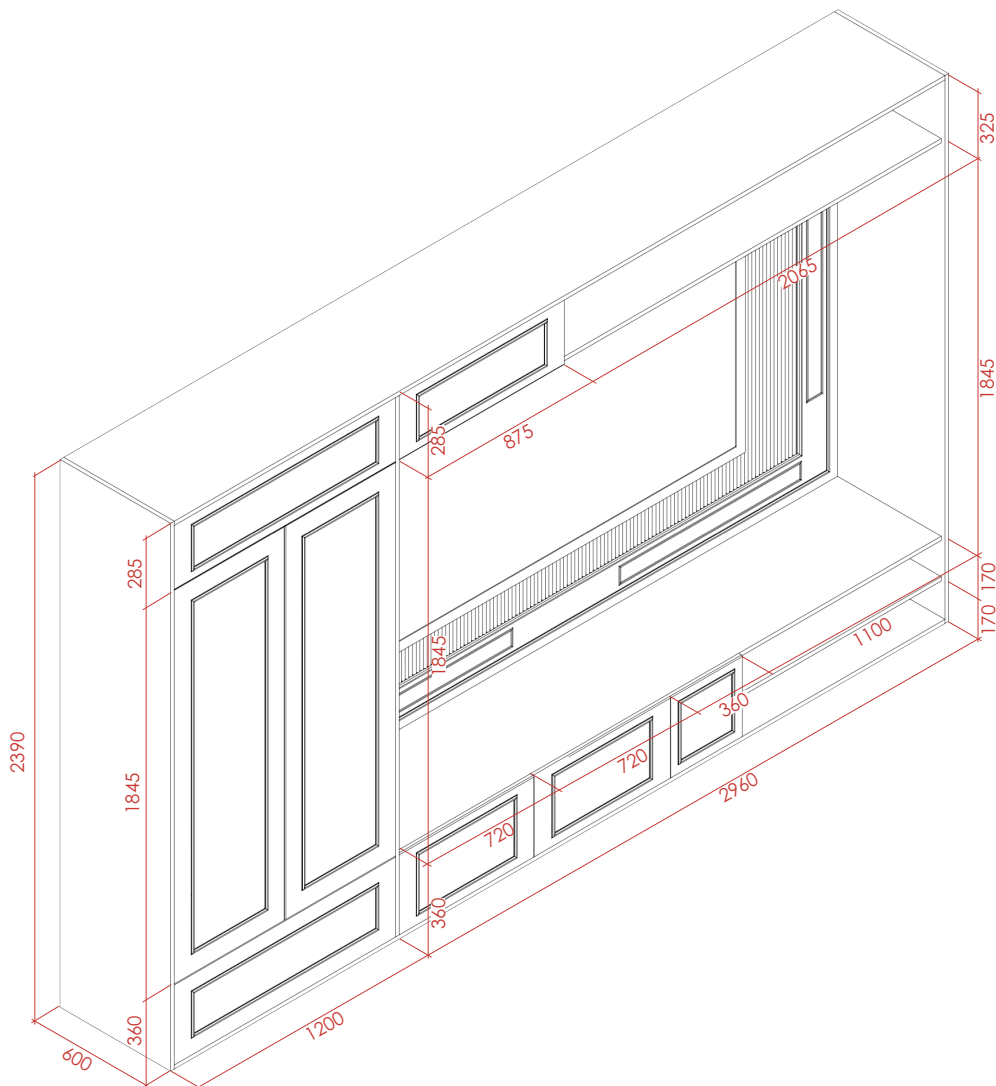


TV UNIT

The top shelf is more spacious than the bottom, but both can be used for any desired decorations. The TV installation space is positioned lower than the TV itself, allowing decorations to be placed there without obstructing the view of the TV. This design provides flexibility in decorating the unit while ensuring practicality and ease of use in the living area.

The construction color is beige with a wood texture, seamlessly complementing the rest of the interior and aligning perfectly with the style desired by the client. The use of wood texture enhances the minimalistic and Scandinavian design elements prevalent throughout the interior. Not only does wood contribute to sustainability, but it also promotes a positive impact on mental health, creating a warm and inviting atmosphere for those inhabiting the space.

DIMENSIONS IN CM
NOT ON SCALE



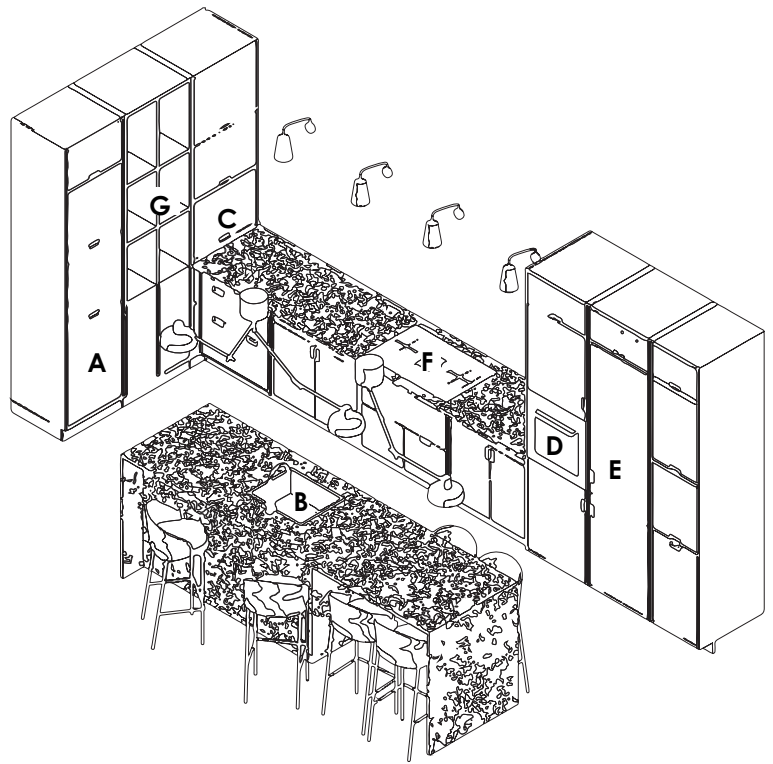
The decorations on the doors ensure that the TV unit is not overly simplistic and doesn't blend into the wall. They complement the wall design by being similar but not identical, creating a harmonious combination without overshadowing one another. The tiles on the back of the unit provide a pleasant contrast and enhance the surrounding wood texture. Additionally, the tiles contribute to connecting the TV unit with other areas of the room, infusing freshness and cohesion throughout the space. This thoughtful design approach enhances both aesthetic appeal and visual continuity in the living area.

KITCHEN

The kitchen stands as the largest design feature of the apartment, employing the same premium resources found in other parts of the space. Here, however, it includes an additional layer of protection to prevent damage, deformation, or mold growth over time.

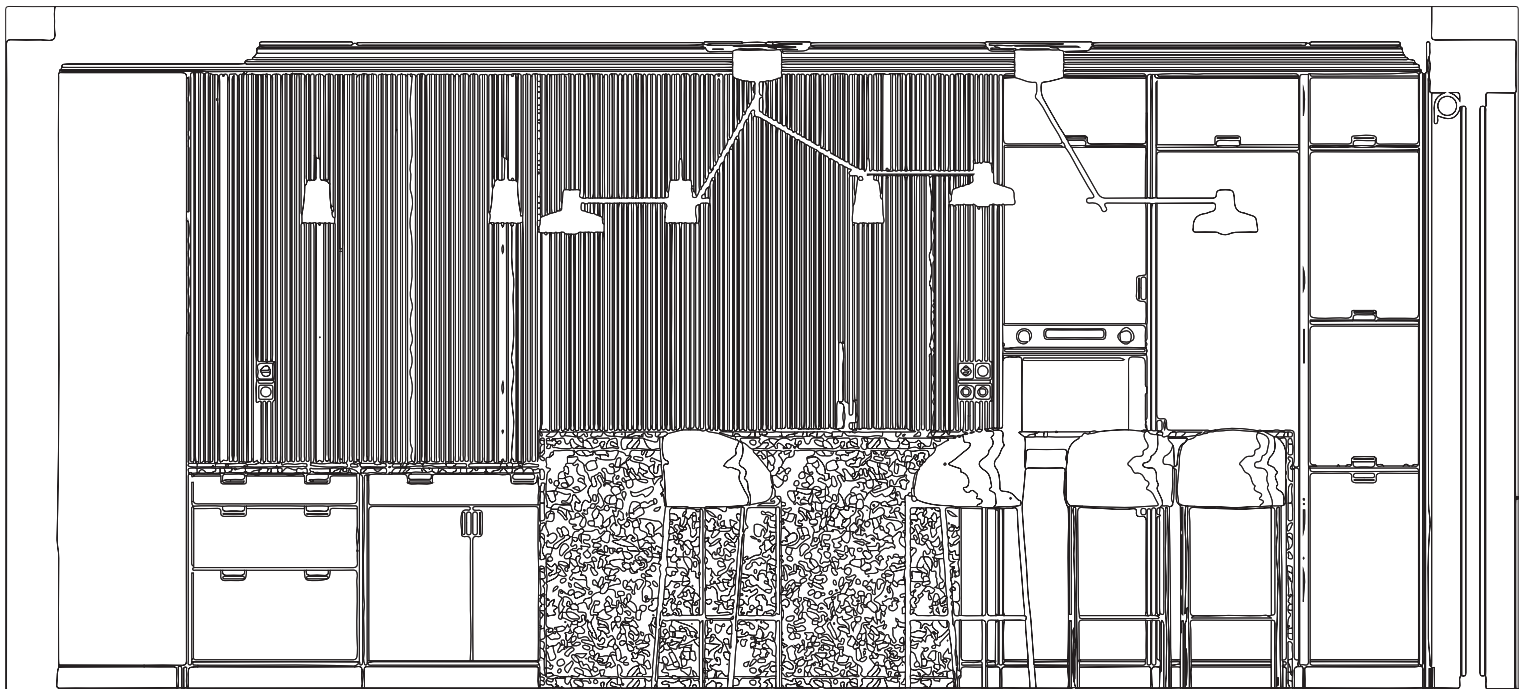
The kitchen countertop is crafted from timber terrazzo, a distinctive material sourced from England. This unique choice not only adds aesthetic charm but also guarantees durability and functionality. The terrazzo's blend of timber and other materials not only enhances the kitchen's visual appeal but also contributes to its resilience in a high-use area.

This meticulous attention to detail ensures that the kitchen not only serves as a practical workspace but also as a focal point that enhances the overall ambiance and style of the apartment.



SIDE	MATERIAL	FUNCTION
A	PLY BIRCH WOOD	DISHWASHER
B	PLY BIRCH WOOD	KITCHEN BAR
C	PLY BIRCH WOOD	HIDDEN COFFEE
D	PLY BIRCH WOOD	OVEN
E	PLY BIRCH WOOD	FRIDGE
F	PLY BIRCH WOOD	STOVE
G	PLY BIRCH WOOD	OPEN STORAGE

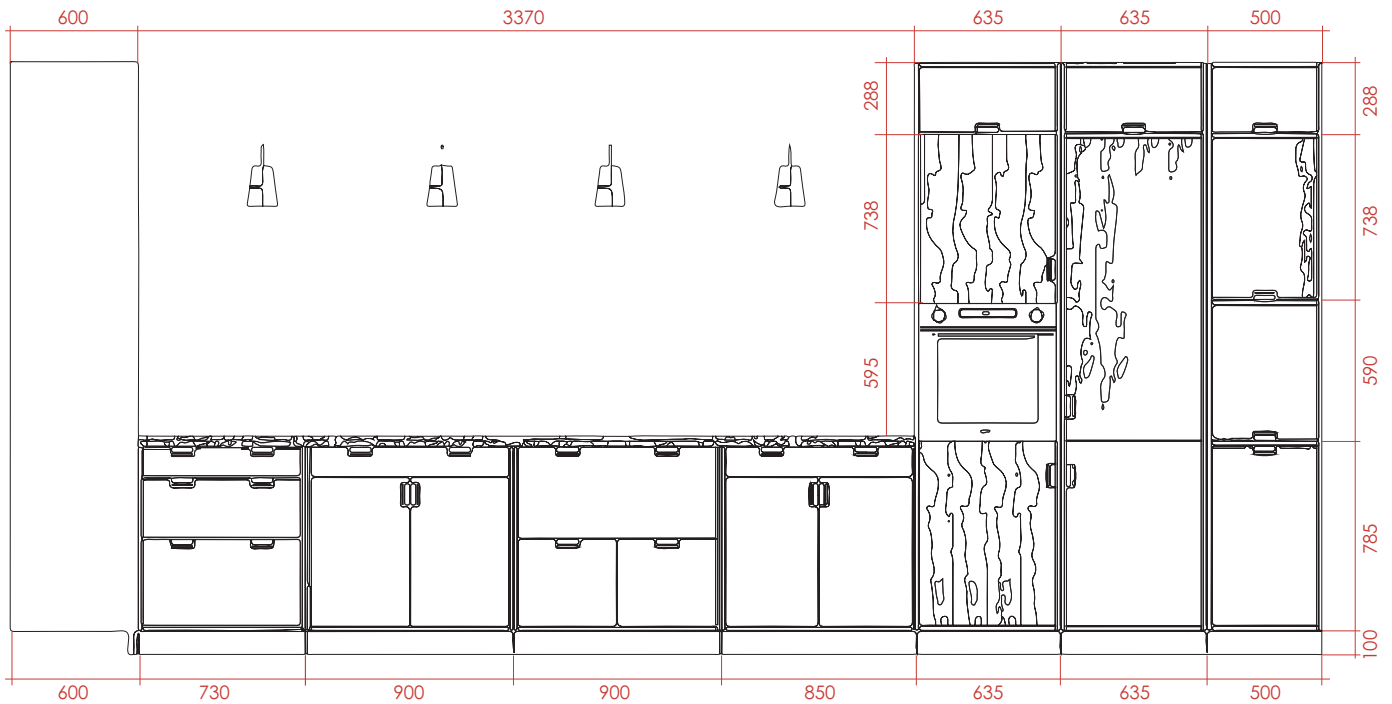
VISUAL | CUSTOM DESIGN IN THE ROOM | FRONT VIEW



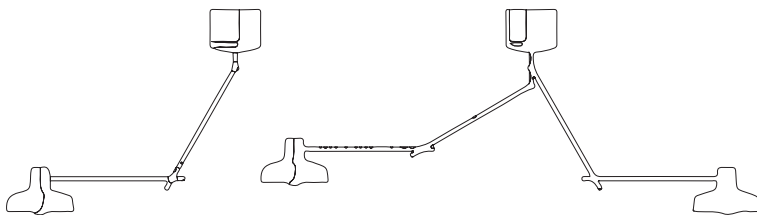
KITCHEN

The dimensions of the kitchen adhere to standard heights and ergonomic principles for comfortable use. The distance between the wall counters and the island is carefully measured to provide ample seating space and ensure easy passage for adults. The oven is strategically positioned higher for safety and convenience, allowing items to be accessed or checked on without the need to bend over.

This thoughtful layout not only enhances safety but also improves efficiency in meal preparation. By placing essential items within arm's reach, the kitchen design prioritizes convenience and practicality, creating a user-friendly environment that facilitates smooth cooking and dining experiences.

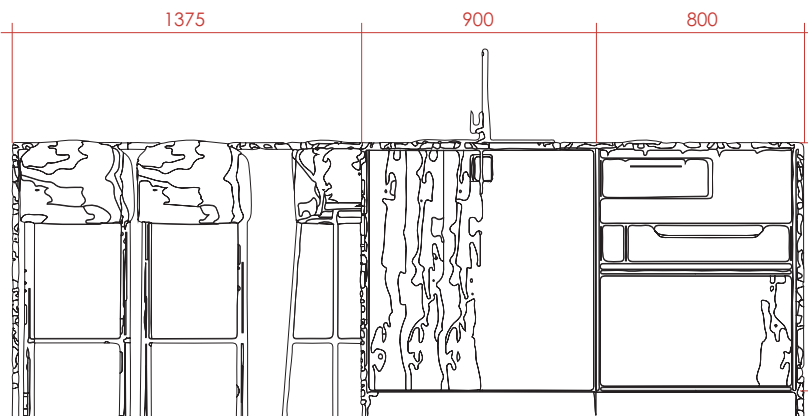


DIMENSIONS IN CM
NOT ON SCALE



The island includes a drying rack on one side, specifically designed for pots or dishes that cannot be washed in the dishwasher. This feature allows for traditional handwashing and proper drying without creating a mess, maintaining kitchen cleanliness and organization.

The lamps in the kitchen are positioned at a comfortable height and are adjustable to suit individual preferences. They can be lowered or repositioned as needed, ensuring optimal lighting in key areas for tasks such as cooking and food preparation. This flexibility enhances comfort and functionality, accommodating different activities and lighting requirements in the kitchen.

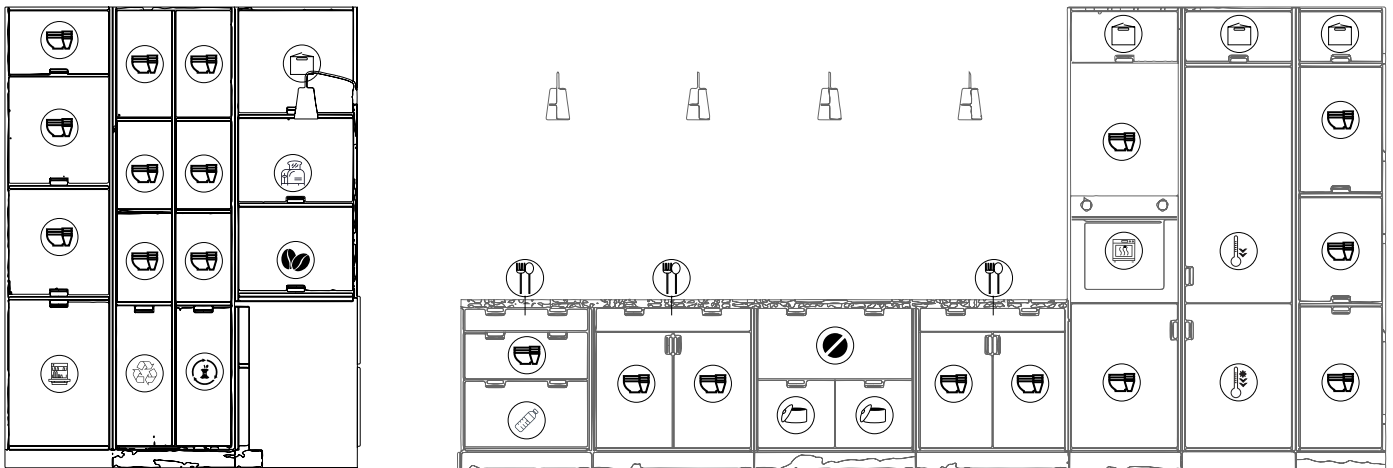


KITCHEN FUNCTION

VISUAL | KITCHEN



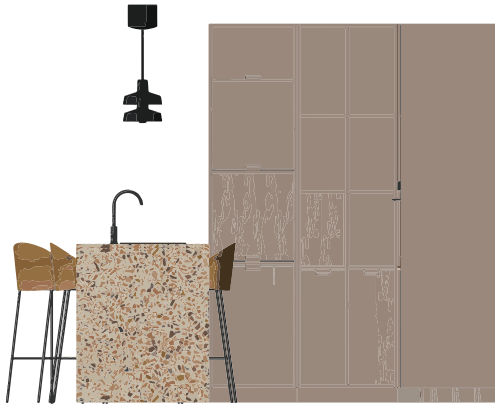
FUNCTIE | KITCHEN



For optimal use and greater satisfaction, it is recommended to utilize this ideal layout. Each shelf is designated for specific items, facilitating easy organization and recycling. This setup simplifies the sorting of silverware or dishes without the need to search through cabinets, enhancing efficiency and convenience in the kitchen.

KITCHEN LIGHT

VISUAL | KITCHEN

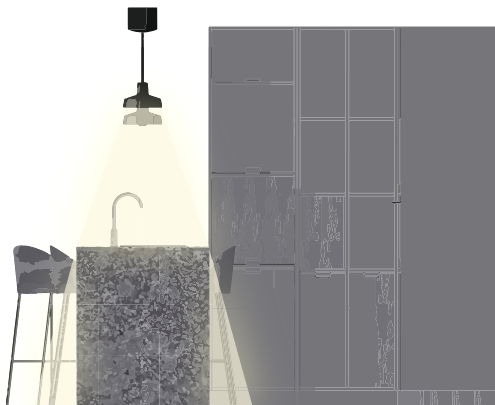


SIDE VIEW KITCHEN

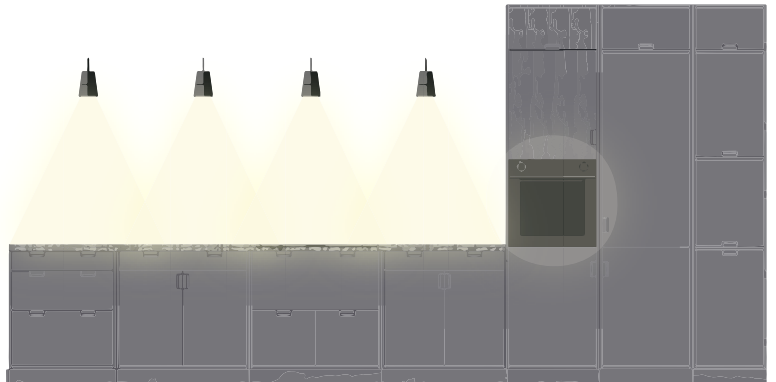


FRONT VIEW KITCHEN WITHOUT THE BAR

VISUAL | LIGHT KITCHEN



SIDE VIEW



FRONT VIEW KITCHEN WITHOUT THE BAR

DESCRIPTION



ARIGATO AR COLLECTIE

Above the kitchen island, two types of lamps from the same manufacturer are hung: the Arigato AR-C with one lampshade, and the Arigato AR-C2 with two lampshades. The body is made of steel tubing, while the lampshade is made of aluminum and finished with matte black powder coating, later changing to RAL 9004.



ILI ILI WANDLAMP

The wall lamps hanging in the kitchen are called Ili Ili wall lamps. They are made of aluminum, with PVC cables, and finished with a matte powder coating. Later colored in RAL 9004.



LED NEON STRIP

At the bottom of the kitchen counter, near the kitchen island, a few LED strips have been installed. They are LED Neon strips with warm white light, which will be connected later to a dimmer in the kitchen. The LED strip is concealed underneath the counter, providing sufficient light while hiding the light source itself.



RAL 9004

The color RAL 9004 has been used for lamps, sockets, and dimmers. Each colored object receives a matte finish.

APPLICABLE SYMBOLS

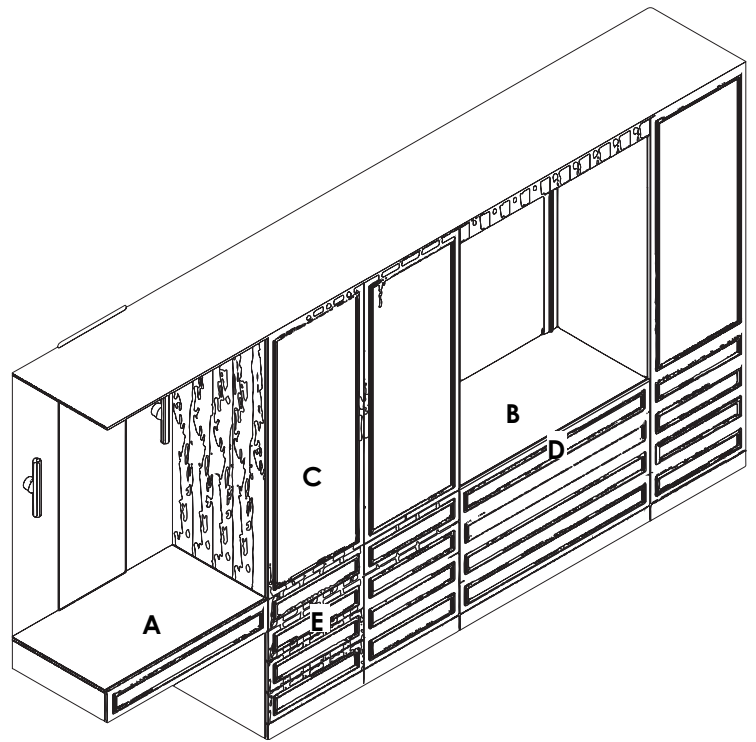


BEDROOM

The bedroom closet provides ample space for comfortably sorting clothes for two people across different seasons. It features shelves dedicated to the current season's wardrobe as well as additional shelves for storing clothes for later seasons.

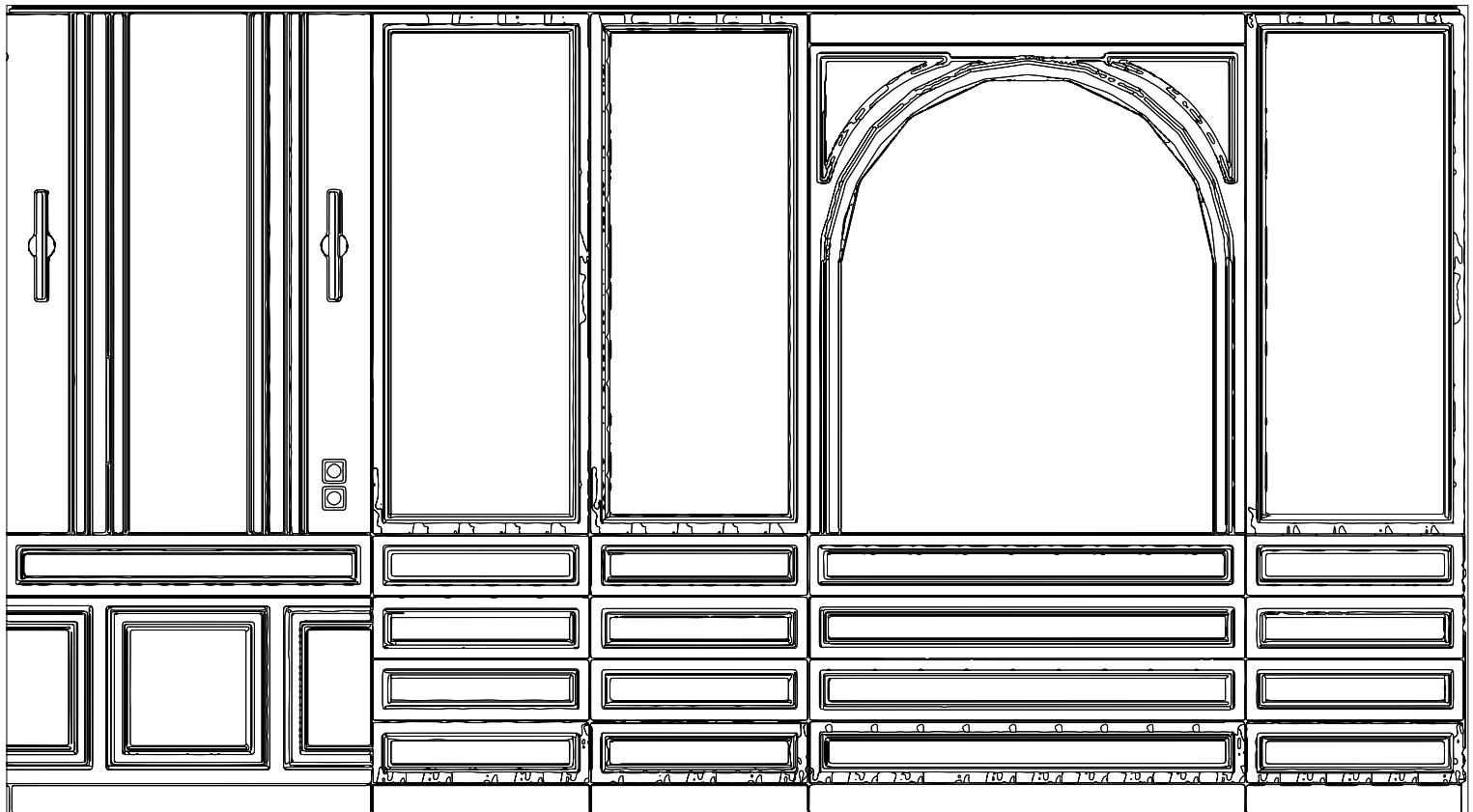
On the left side, the makeup table includes a shelf designed for organizing makeup items, with multiple small pockets ensuring neat storage and preventing bottles from cluttering the surface.

On the right side, there is a mirror with LED strips behind it, creating a dedicated jewelry corner. A thin shelf is provided for organizing jewelry, ties, or watches, enhancing organization and accessibility within the bedroom closet. This setup not only optimizes storage space but also enhances functionality and convenience for daily use.



SIDE	MATERIAL	FUNCTION
A	PLY BIRCH WOOD	MAKEUP TABLE
B	PLY BIRCH WOOD	MIRROR SPACE
C	PLY BIRCH WOOD	LARGE STORAGE
D	PLY BIRCH WOOD	JEWELERY STORAGE
E	PLY BIRCH WOOD	SMALL STORAGE

VISUAL | CUSTOM DESIGN IN THE ROOM | FRONT VIEW

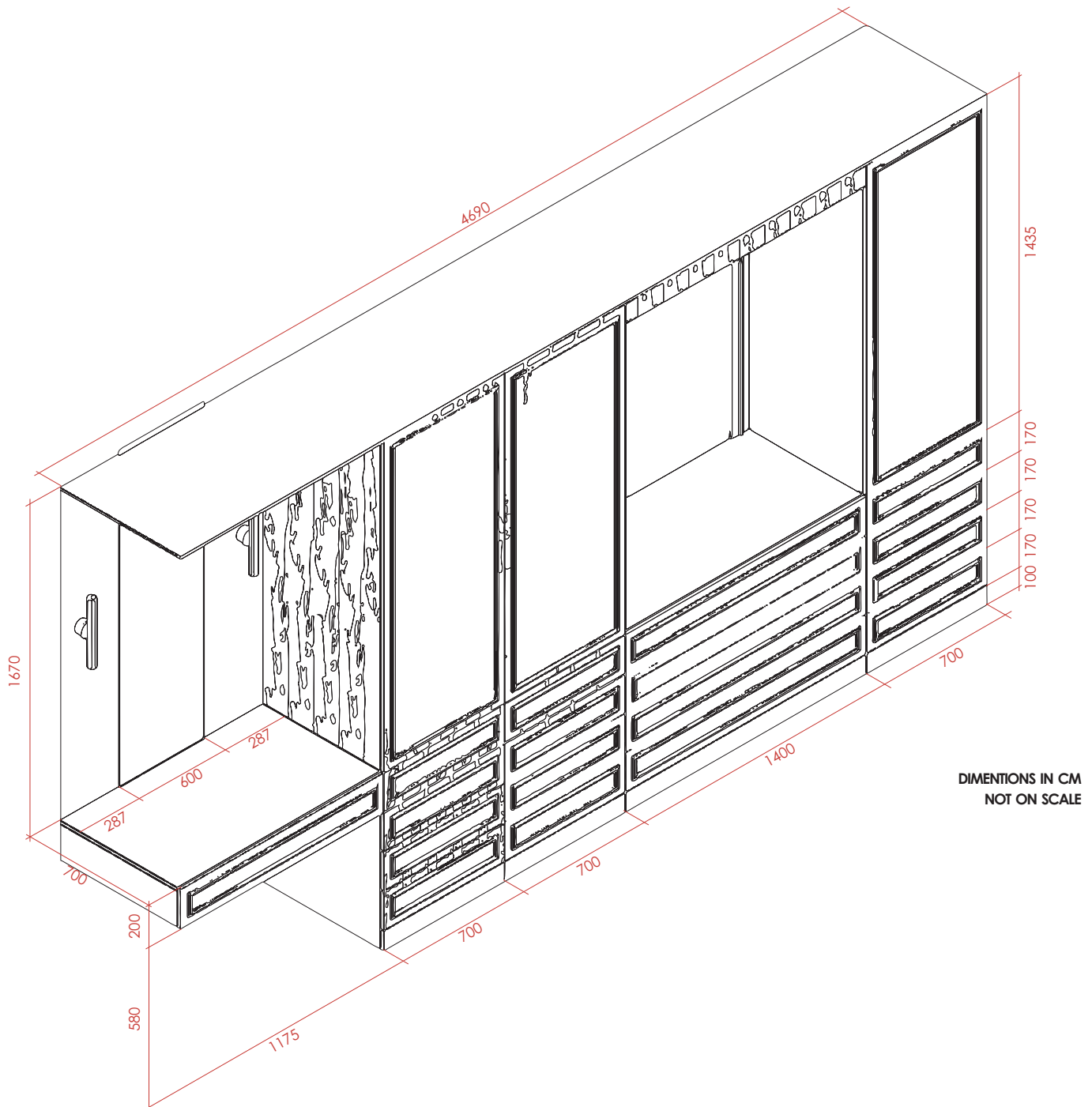


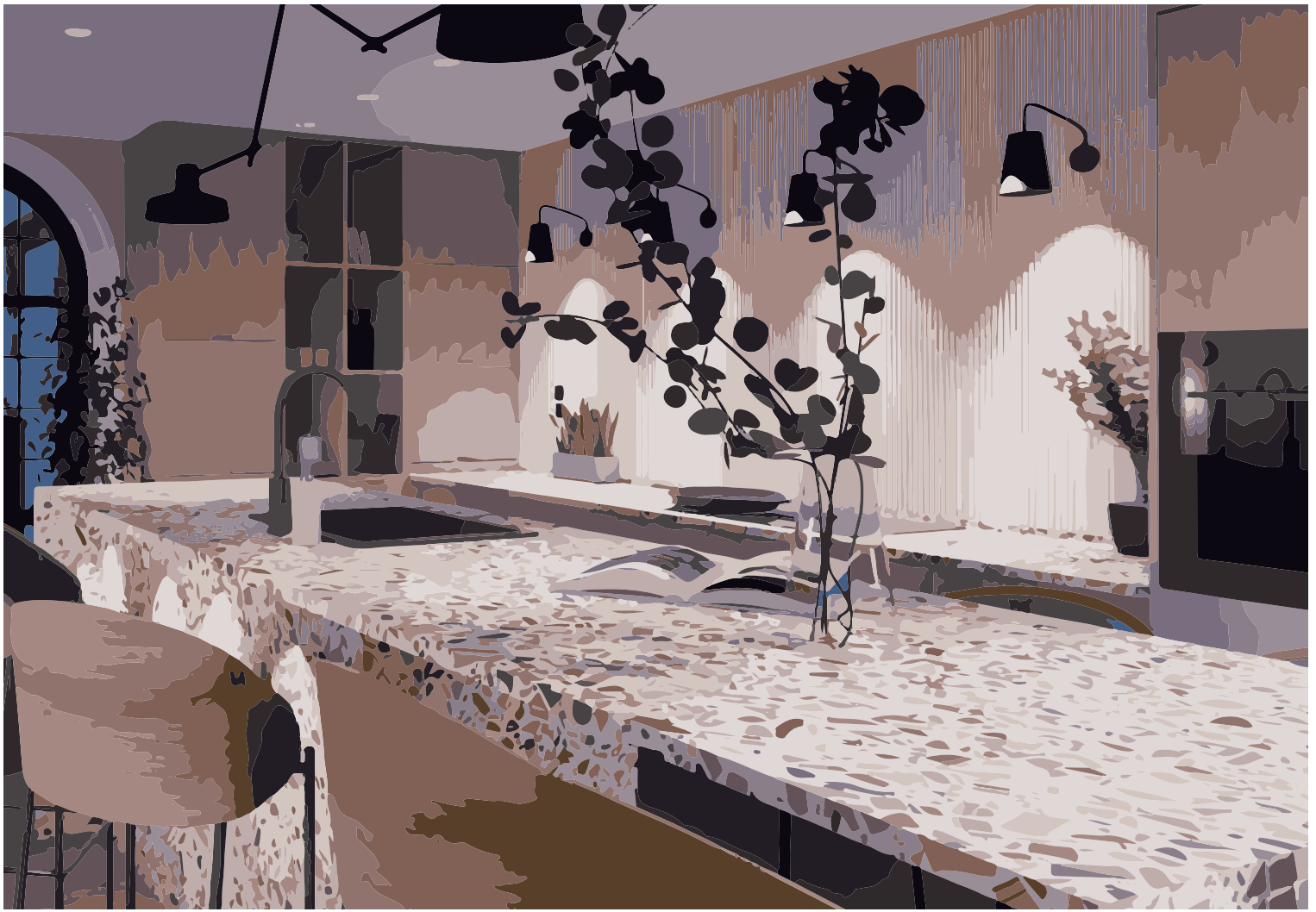
BEDROOM

Each shelf in the bedroom closet is carefully dimensioned to accommodate specific items effectively. The closet features three large hanging storage systems, providing ample space for organizing clothes by season or occasion. Complementing these are additional shelves designed to neatly arrange folded garments and accessories, ensuring everything is easily accessible and well-organized.

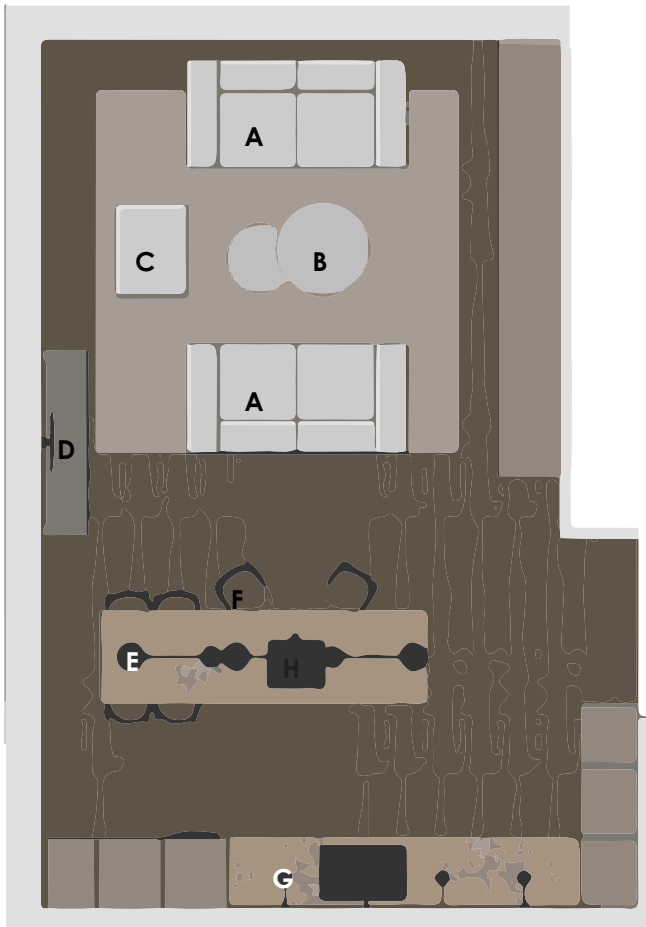
Constructed from the same high-quality materials used in the kitchen, office table, and TV unit, the closet not only promotes a seamless integration of design elements throughout the apartment but also reflects a commitment to sustainability. By utilizing scraps from previous projects in crafting new designs, the craftsman enhances resource efficiency while maintaining a cohesive aesthetic across different living spaces.

This thoughtful approach not only enhances functionality and organization within the bedroom but also contributes to a unified and environmentally conscious interior design scheme throughout the home.





furniture



In addition to custom furniture pieces, the apartment features other essential furniture items such as sofas, coffee tables, and a footstool. The decision to include two separate sofas was driven by the client's preference for ample seating capacity and the ability to facilitate face-to-face interactions. This layout allows for comfortable seating arrangements for multiple individuals while promoting social interaction.

The two sofas are complemented by an additional footstool, providing seating for extra guests during gatherings or parties. This setup not only enhances the functionality of the living area but also reflects the client's desire to create a welcoming and sociable environment within the apartment.

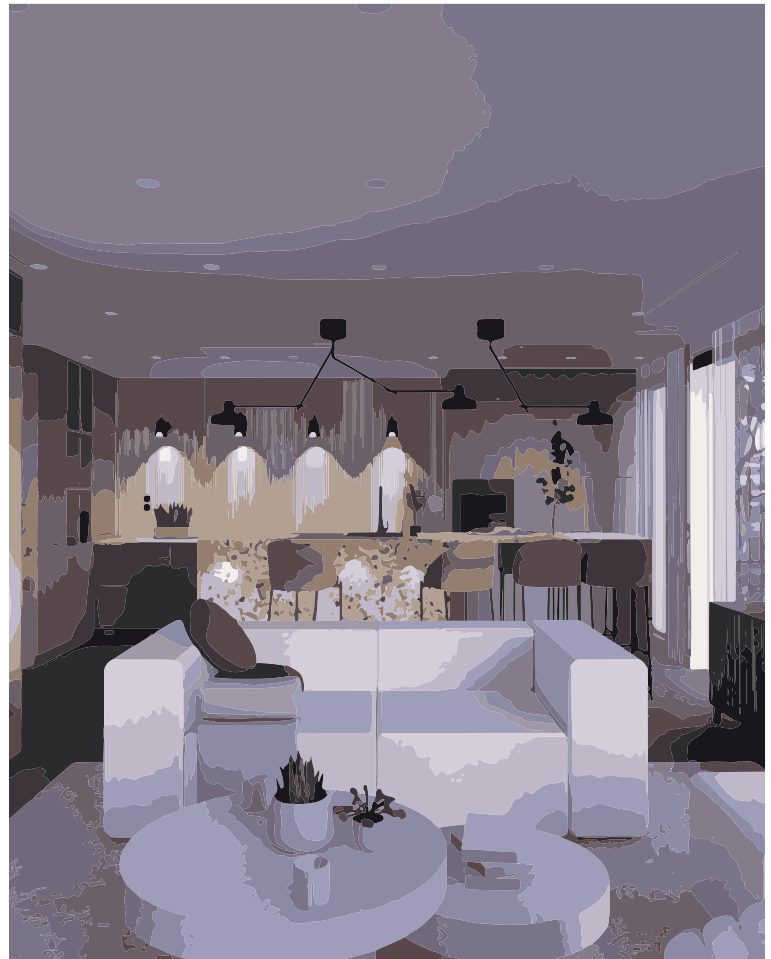
OBJECT	NAME	PRICE
A	BLOK	€ 1.215,-
B	CONCRETE TABLE SET	€ 900,-
C	BLOK LEGREST	€ 275,-
D	BEYLA	€ 889,-
E	DIONE	€ 219,-
F	EAMY	€ 309,-
G	ARIA	€ 120,-
H	BLACK SINK	€ 350,-



The kitchen features minimal loose furniture, with the lamps and barstools being the primary elements. The selection of barstools was straightforward, as their combination of wood and style perfectly complemented the interior and harmonized with the kitchen island.

Both lamps share the same RAL color to create a cohesive look. The pendant lamp above the island is strategically positioned to provide adjustable lighting, allowing illumination to be directed to various points on the island. Additionally, the lamp tops feature a 360-degree turning function, enhancing flexibility in lighting and functionality within the kitchen space.

This thoughtful combination of furniture and lighting not only enhances the aesthetic appeal but also contributes to the practicality and functionality of the kitchen, ensuring a cohesive and well-designed living space.



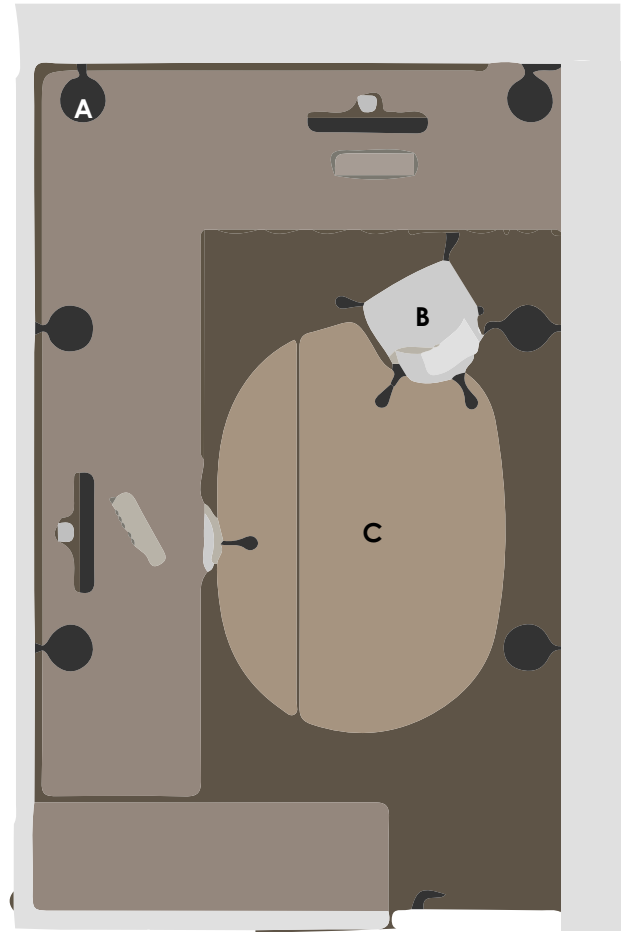
furniture

The office space is primarily furnished with three key pieces of furniture. In addition to small decorations and computers, the main features include the desk and storage unit. The chairs in the office follow a similar style to the barstools in the kitchen, emphasizing a cohesive design throughout the apartment. The Madai chair distinguishes itself with a taller back pillow, providing enhanced comfort during work sessions.

The lamps in the office are coordinated with the same RAL color as the kitchen lights, ensuring a unified aesthetic across different areas. Strategically placed throughout the room, these lamps facilitate effective lighting for nighttime work. They are equipped with dimmer controls, allowing users to adjust the light levels to create a comfortable and conducive environment for focused tasks without relying solely on overhead lighting.

This setup not only enhances the functionality of the office space but also promotes a harmonious and adaptable atmosphere, catering to varying work preferences and needs throughout the day and night.

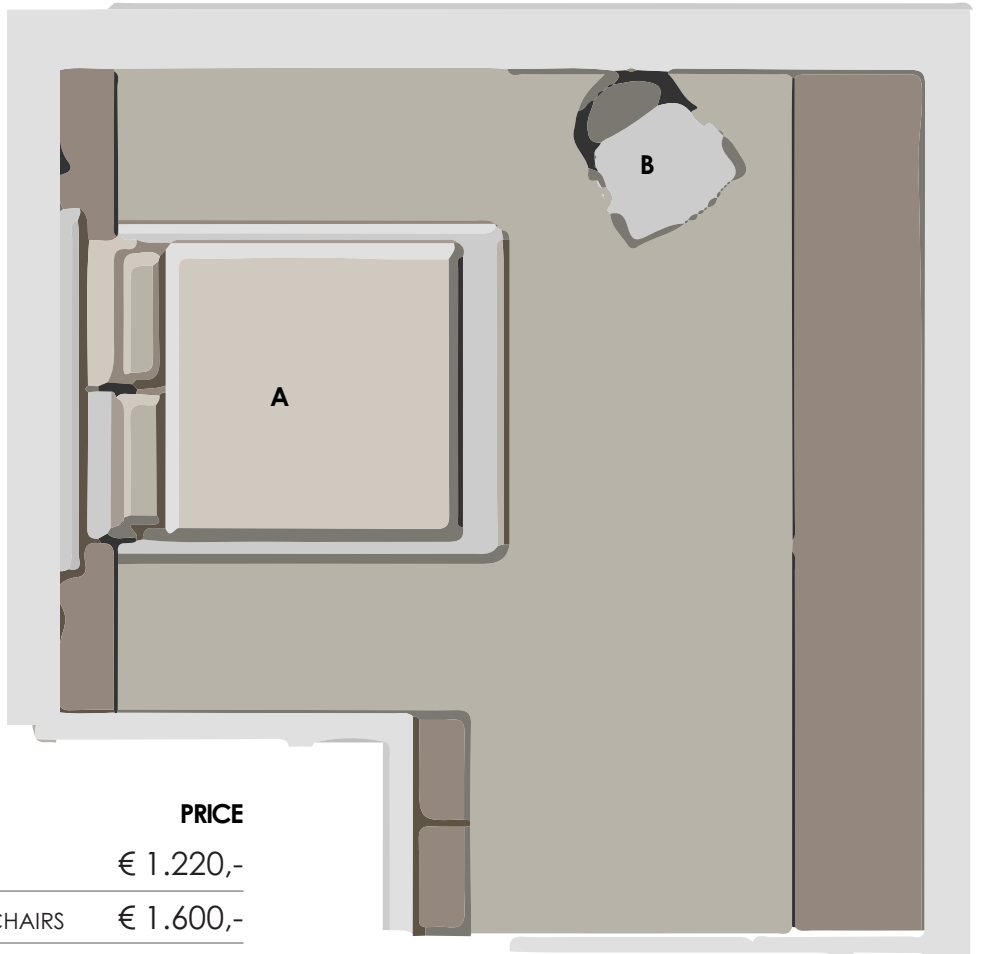
OBJECT	NAME	PRICE
A	ARIA	€ 60,-
B	MADAI	€ 389,-
C	COSIMA	€ 329,-



BEDROOM

The bedroom is designed to maintain a minimalist aesthetic, featuring only essential furniture pieces such as the bed and an old, classic chair placed next to the makeup stand. This deliberate choice emphasizes a calming atmosphere, avoiding the potential for overwhelming clutter that can detract from relaxation. By keeping furniture to a minimum, the room feels spacious and airy, fostering a sense of tranquility and serenity conducive to restful sleep and relaxation.

This minimalist approach not only enhances the visual appeal of the bedroom but also promotes a functional and harmonious environment where each piece serves a specific purpose without overwhelming the space. It allows for clear pathways and unobstructed views, further enhancing the overall peaceful ambiance desired in a bedroom setting.



OBJECT	NAME	PRICE
A	MARTINA	€ 1.220,-
B	PAIR OF LOUIS XV STYLE ARM CHAIRS	€ 1.600,-



LAYOUT SUMMARY



The apartment's layout is meticulously tailored around bespoke furniture pieces crafted specifically for the client, ensuring they optimize every corner of available space. These custom furnishings not only imbue the apartment with a unique and contemporary aesthetic but also exemplify a commitment to sustainability and functionality.

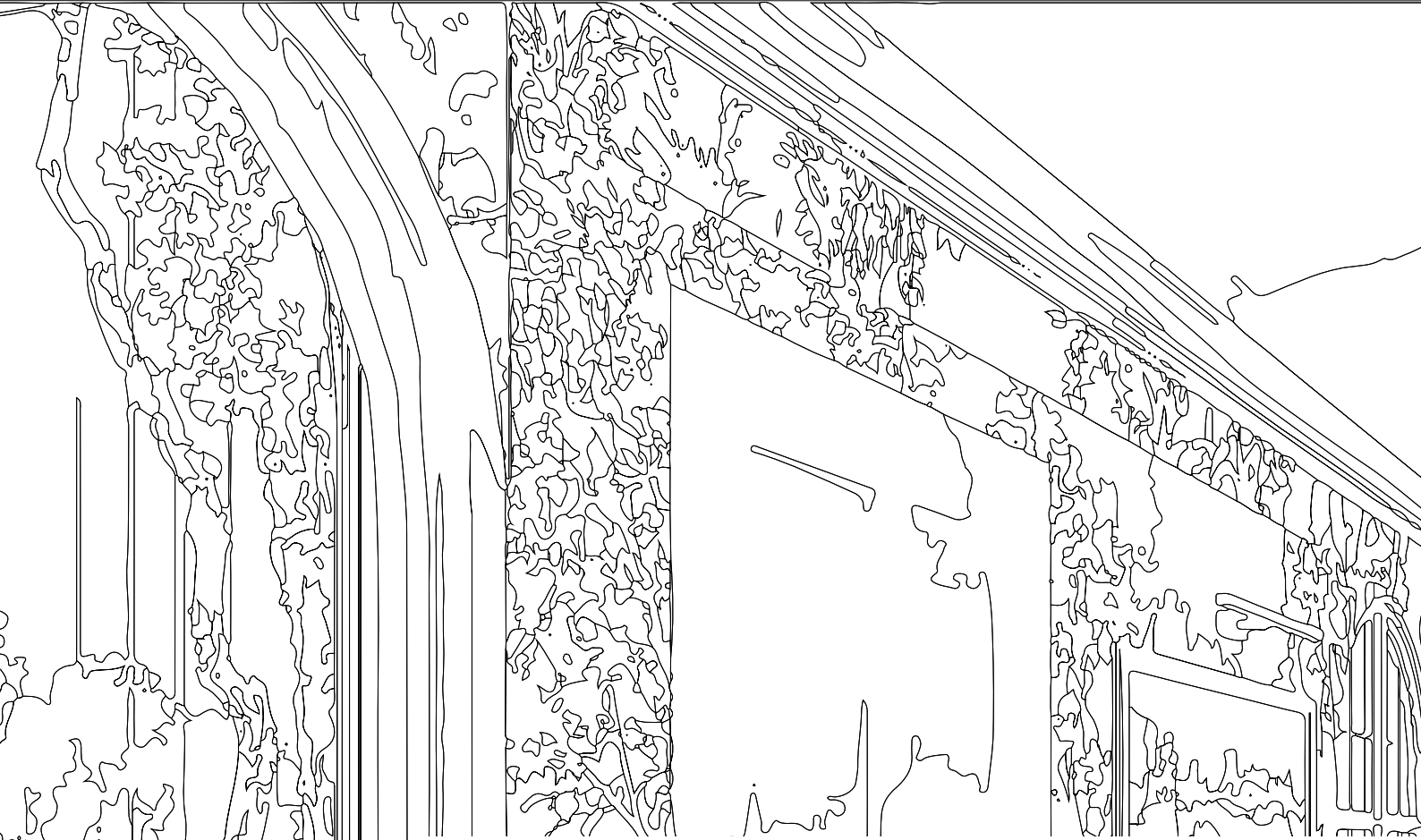
Sustainability is at the forefront of the apartment's design ethos. Each furniture piece, from the kitchen cabinetry to the bedroom storage units, is thoughtfully crafted using eco-friendly materials such as responsibly sourced wood, recycled materials, and low-VOC finishes. This conscientious choice not only minimizes environmental impact but also promotes a healthier indoor environment for the residents.

Abundant storage solutions are strategically integrated throughout the apartment, enhancing organization and minimizing clutter. These units are designed not only for practicality but also as integral components of the apartment's minimalist aesthetic. They offer ample space for storing belongings while maintaining a clean and streamlined appearance.

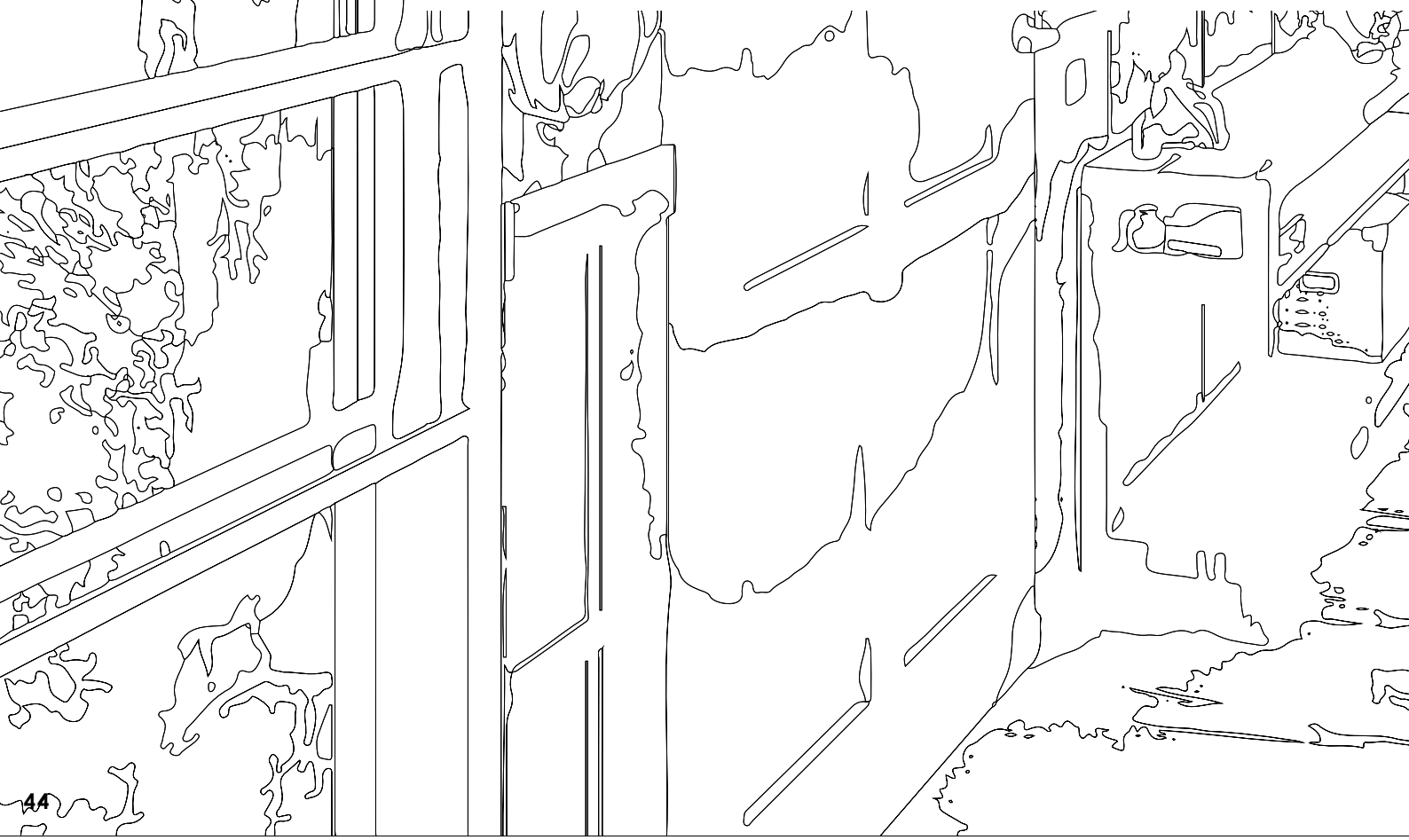
In addition to functional storage, the apartment features carefully curated decorations and smaller furniture items that complement the overall design theme. Soft colors and flawless textures dominate the interior, creating a soothing and inviting atmosphere. Occasional darker elements such as light fixtures and electrical outlets provide subtle contrasts, adding depth and visual interest to the space.

The deliberate use of sustainable materials and minimalist design principles underscores a commitment to responsible living. By reducing consumption and focusing on longevity and quality in furniture and decor choices, the apartment promotes a sustainable lifestyle without compromising on style or comfort.

Ultimately, the apartment serves as a testament to the seamless integration of sustainability and modern design. It not only reflects the personal taste and preferences of its inhabitants but also embodies a conscious effort to create a living space that is both aesthetically pleasing and environmentally responsible.

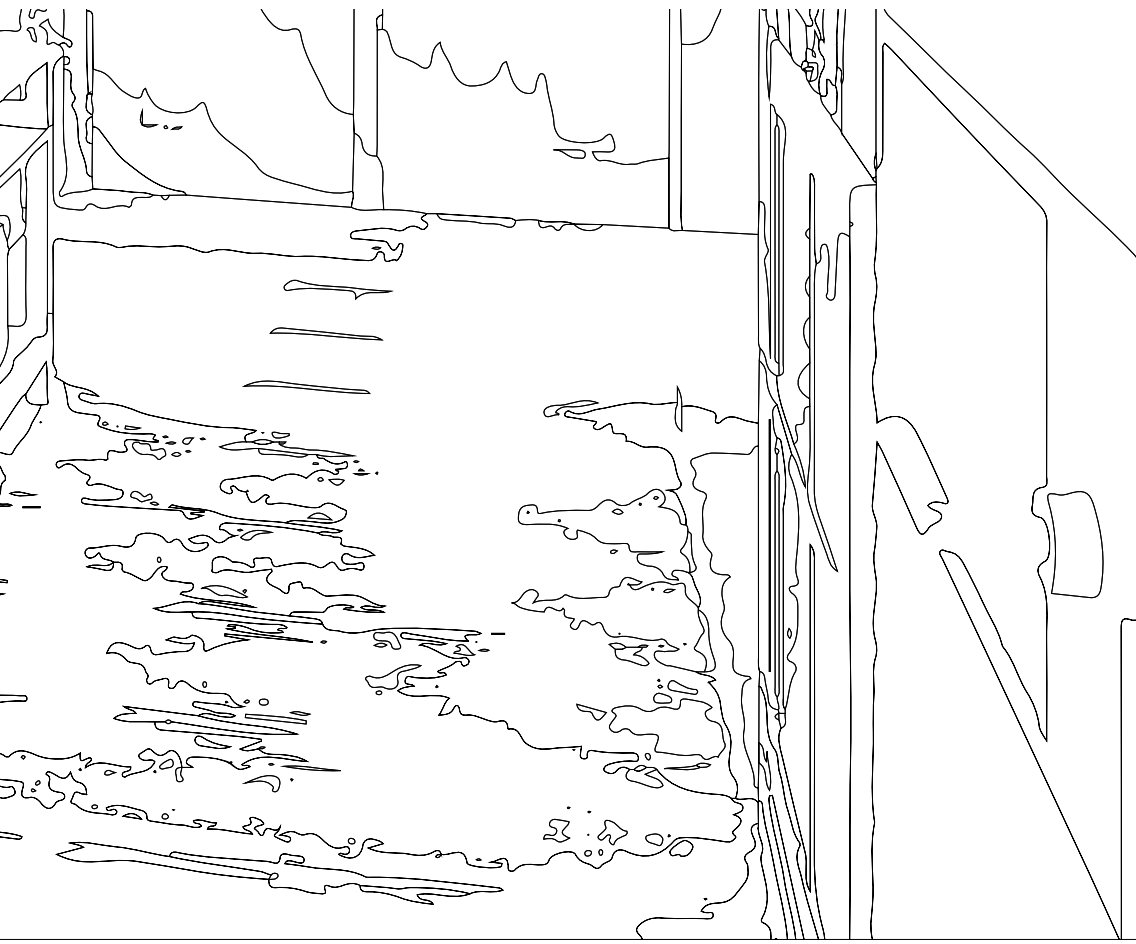


realistic





visuals











round the clock

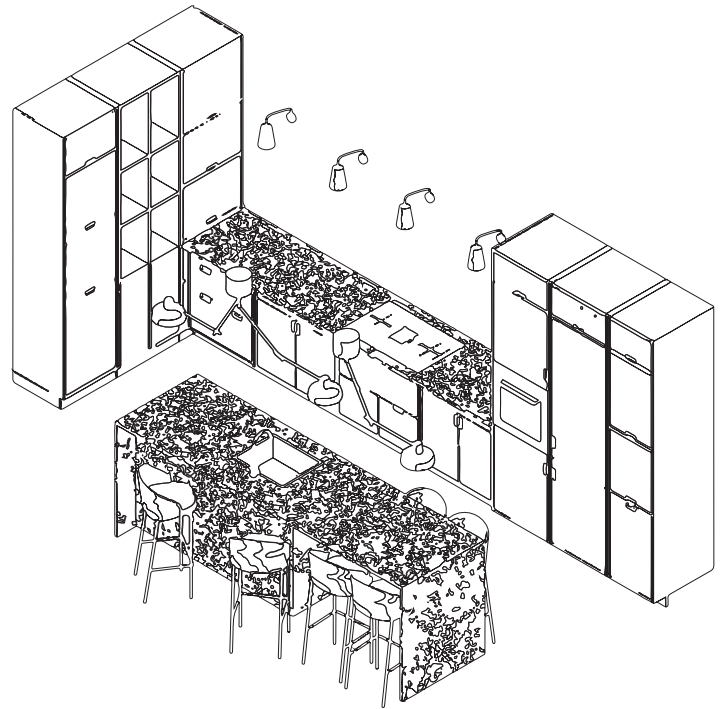
kitchen in different light and time

In the visuals of the kitchen, you can observe how natural light interacts with the space throughout different times of the day. At night, the strategic placement of both main and decorative lighting sources is clearly evident, enhancing both functionality and ambiance.

The kitchen is designed with versatility in mind, making it ideal for multiple people to use simultaneously or as a gathering place for casual conversations. Its layout encourages ease of movement and interaction, whether preparing meals or simply enjoying company.

A notable feature of the kitchen is its lowered ceiling, which provides a subtle separation from the adjacent areas of the room. This architectural element not only adds a sense of coziness and intimacy to the kitchen space but also contributes to its distinct character within the overall apartment layout.

Overall, the kitchen is crafted to blend practicality with aesthetics, offering a welcoming environment that adapts effortlessly to different activities and social interactions throughout the day and night.

















decor in comfort

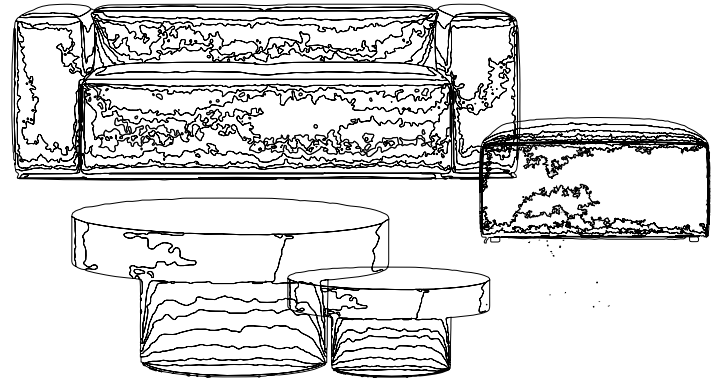
details of living area

The living room is conveniently situated right next to the kitchen, yet the thoughtful layout ensures ample space to walk around comfortably without the impression of sitting directly in the kitchen. This spatial design enhances the distinct identities of both areas, allowing for seamless flow while maintaining their individual functionalities.

The living area boasts large windows all around, providing abundant natural light and offering beautiful views. To ensure privacy and prevent neighbors from looking inside, each window is equipped with slightly transparent curtains. For complete light blockage and optimal privacy, electric blinds can be fully lowered, controlled via an app for added convenience, eliminating the need for manual adjustments.

In the evening, the living room transforms into a stunning space, especially during the pink skies of warm summer nights. This creates a romantic and serene environment, perfect for relaxing or entertaining guests. The combination of natural light during the day and the cozy ambiance at night makes the living area an inviting and versatile space for any occasion.

Overall, the living room's design, with its spacious layout, large windows, and advanced privacy solutions, contributes to a harmonious and luxurious living experience, complementing the adjacent kitchen and enhancing the overall appeal of the apartment.













the way inside

look around the hallway

This project brings together styles and materials that I personally find very appealing. My research into the history of wood and how humans have evolved alongside its use has led to a deep appreciation for this material. The Japandi and minimalist styles, which are becoming increasingly popular today, reflect this appreciation. These styles are appealing for various reasons, but I believe the COVID-19 pandemic has played a significant role. The pandemic has shown people the importance of having a comfortable and serene home environment.

The Japandi style combines Japanese and Scandinavian design principles, with a focus on natural materials and soothing color tones. This brings nature indoors and creates a calm, serene atmosphere. Moreover, this type of interior is easy to maintain and requires little upkeep, making it highly practical.

To keep the interior unique, however, I have chosen materials and shapes that are not often seen in standard Japandi style. One example is the use of a terrazzo-like material for the kitchen countertop. At first glance, it looks like traditional terrazzo, but upon closer inspection, you can see that it consists of small pieces of wood instead of marble.

This concept is not only less harmful to the environment than real terrazzo, but it is also aesthetically pleasing. In my opinion, it is even more beautiful, as the wood pieces create a connection with the rest of the interior.

Additionally, specific tiles have been used in the kitchen and living room. These tiles consist of small, glued-together arches, resulting in a warm and soft wall. Although they are made of stone or cement, they appear friendlier than square tiles due to their rounded shapes. Scientific research has shown that people prefer round, oval, and closed shapes to sharp corners. I have applied this principle throughout the interior, from lamps and wall panels to coffee tables and mirrors.

The interior is carefully balanced between round and sharp shapes. While round shapes are found everywhere, from the living room to the office, I have ensured a balance with sharp shapes. Without sharp shapes, the overall feel would be too overwhelming, while only round shapes would give an unbalanced impression. This balance is evident in the choice of carpets; the carpet in the living room has a different shape than the one in the office. I offer my clients the option to adjust shapes or tones, but I always strive to maintain a good balance in every space.





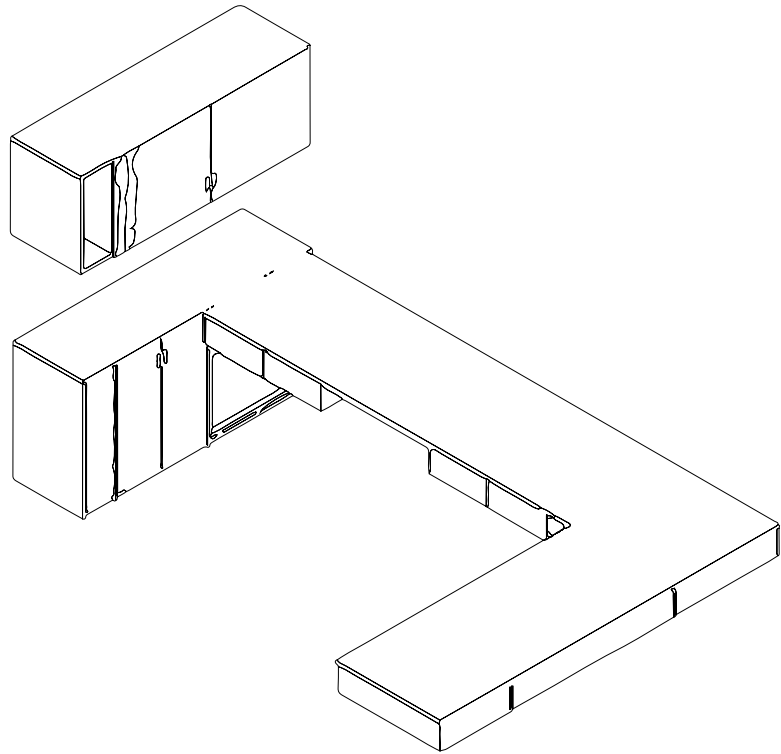
office for two

great look around the office

Because the apartment is small, I wanted to make each space unique and enjoyable while still maintaining a connection between them. For example, the same tiles are used in both the living room and kitchen to create a connection. Of course, they are used more extensively in the kitchen, but by incorporating them into a section of the TV cabinet in the living room, you create a pleasing link between the two spaces. This also strengthens the TV cabinet's visual impact.

Throughout the house, a touch of black has been used in the lamps to create a cohesive look, indicating the source of light. The only exception is the wall lamps in the bedroom, where the mounting is black, but the predominant material is milk glass.

Speaking of lamps, there is a lot of indirect and decorative lighting throughout the apartment. This was intentional because I wanted not only central lighting but also mood lighting that can be switched on when you come home late, allowing you to relax. To better control the light day and night, good window treatments are essential. For this, I have installed in-betweens on every window in white color. These allow daylight to filter through while maintaining privacy from the neighbors. Additionally, for complete darkness, automatic roller blinds are installed within the window frames.





























A detailed architectural line drawing of an interior space, featuring a window with a view of a landscape. The drawing is composed of clean, black lines on a white background. The window is on the right side, showing a view of a landscape with a large, rounded object, possibly a tree or a building. The interior space is defined by vertical and horizontal lines, suggesting a room with a window. The drawing is partially obscured by the text and other elements on the page.

thank- you

Thank you for taking the time to read my project. This was my exam project that helped me complete my last year of interior design studies. I look forward to learning more about architecture and combining it with interior design to improve the world.

The houses we live in and the places we grow up matter a lot, both mentally and physically. The spaces we use to rest, dine with our families, and spend our time in are all important. Interior spaces matter, and the exterior shapes the interior. Houses should make us healthier, help us, and guide us. Unfortunately, our housing crisis and the greed of others have resulted in unhealthy infrastructure around us. Many adults and children suffer because of this greed.

Therefore, I hope to prevent this issue from affecting future generations. Our infrastructure should benefit us, as well as the flora and fauna surrounding us. It should surround us with the beauty of nature and protect us from the darkness at night. Let's build homes for people, not for profit.

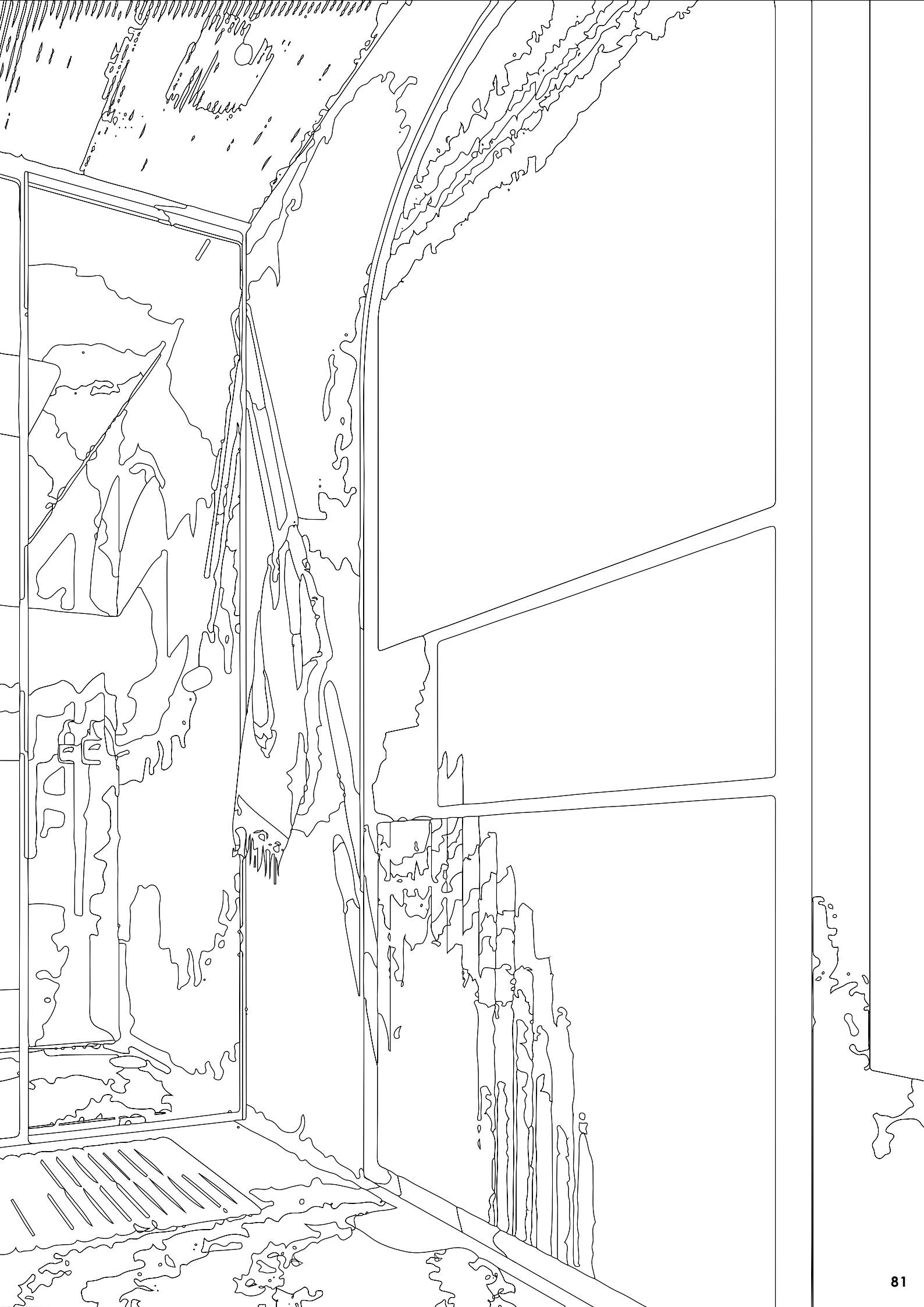
follow me

 VIKTORIJA STRAMKALE

 STUDIO_VIDE

VKSTRAMKALE@GMAIL.COM

WWW.VIDE.DESIGN



CHANNEL YOUR CREATIVITY TOWARDS A GREATER PURPOSE.



JUNE 2024

VI.DE
VIKTORIJA STRAMKALE